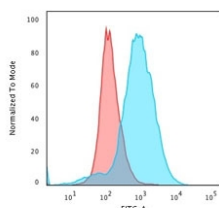


CD28 Antibody [clone CB28] (V2051CF488)

Catalog No.	Formulation	Size
V2051CF488-100T	500 ul at 0.1 mg/ml with 0.1 mg/ml BSA (US sourced), 0.05% sodium azide	100 Tests

Bulk quote request

Availability	1-3 business days
Species Reactivity	Human
Format	CF488 Conjugate
Host	Mouse
Clonality	Monoclonal (mouse origin)
Isotype	Mouse IgG1, kappa
Clone Name	CB28
Purity	Protein G affinity chromatography
Applications	Flow Cytometry : 1-2ug/million cells Immunofluorescence : 1-3ug/ml
Limitations	This CD28 antibody is available for research use only.



Flow cytometry staining of PFA-fixed human Jukat cells with unlabeled CD28 antibody (clone CB28); Red=isotype control, Blue= CD28 antibody.

Description

Recognizes a glycoprotein of 44-88kDa, which is identified as CD28. It is the critical T-cell co-stimulatory receptor which provides to the cell the important second activation signal by binding CD80 and CD86 that are expressed by antigen presenting cells. Besides its co-stimulation role, CD28 functions in preventing T-cells from anergic hyporesponsive state or from undergoing premature apoptotic cell death. CD28 is also expressed on human fetal NK cells and some NK cell lines, whereas on murine NK cells the CD28 expression is much broader.

Application Notes

Optimal dilution of the CD28 antibody should be determined by the researcher.

Immunogen

Recombinant human protein was used as the immunogen for this CD28 antibody.

Storage

Store the CD28 antibody at 2-8oC, protected from light.