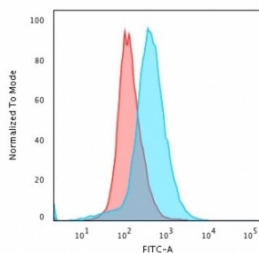


## CD28 Antibody [clone C28/76] (V8233)

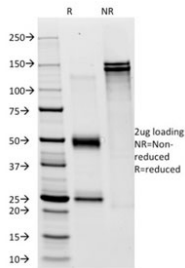
Catalog No.	Formulation	Size
V8233-100UG	0.2 mg/ml in 1X PBS with 0.1 mg/ml BSA (US sourced) and 0.05% sodium azide	100 ug
V8233-20UG	0.2 mg/ml in 1X PBS with 0.1 mg/ml BSA (US sourced) and 0.05% sodium azide	20 ug
V8233SAF-100UG	1 mg/ml in 1X PBS; BSA free, sodium azide free	100 ug

### Bulk quote request

<b>Availability</b>	1-3 business days
<b>Species Reactivity</b>	Human
<b>Format</b>	Purified
<b>Host</b>	Mouse
<b>Clonality</b>	Monoclonal (mouse origin)
<b>Isotype</b>	Mouse IgG1, kappa
<b>Clone Name</b>	C28/76
<b>Purity</b>	Protein G affinity chromatography
<b>UniProt</b>	P10747
<b>Applications</b>	Flow Cytometry : 1-2ug/10 <sup>6</sup> cells in 0.1ml
<b>Limitations</b>	This CD28 antibody is available for research use only.



Flow cytometry testing of PFA-fixed human Jurkat cells with CD28 antibody (clone C28/76); Red=isotype control, Blue= CD28 antibody.



SDS-PAGE analysis of purified, BSA-free CD28 antibody (clone C28/76) as confirmation of integrity and purity.

## Description

Recognizes a glycoprotein of 44-88kDa, which is identified as CD28. It is the critical T-cell co-stimulatory receptor which provides to the cell the important second activation signal by binding CD80 and CD86 that are expressed by antigen presenting cells. Besides its co-stimulation role, CD28 functions in preventing T-cells from anergic hypo-responsive state or from undergoing premature apoptotic cell death. CD28 is also expressed on human fetal NK cells and some NK cell lines, whereas on murine NK cells the CD28 expression is much broader.

## Application Notes

Optimal dilution of the CD28 antibody should be determined by the researcher.

## Immunogen

Recombinant human CD28 protein was used as the immunogen for the CD28 antibody.

## Storage

Store the CD28 antibody at 2-8°C (with azide) or aliquot and store at -20°C or colder (without azide).