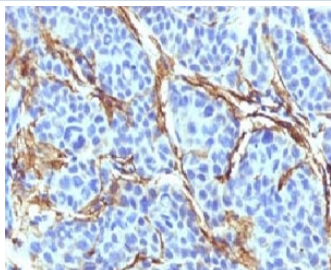


CD271 Antibody / NGFR / p75NTR [clone CDLA271] (V7134)

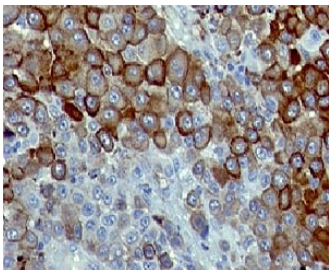
Catalog No.	Formulation	Size
V7134-100UG	0.2 mg/ml in 1X PBS with 0.1 mg/ml BSA (US sourced) and 0.05% sodium azide	100 ug
V7134-20UG	0.2 mg/ml in 1X PBS with 0.1 mg/ml BSA (US sourced) and 0.05% sodium azide	20 ug
V7134SAF-100UG	1 mg/ml in 1X PBS; BSA free, sodium azide free	100 ug
V7134IHC-7ML	Prediluted in 1X PBS with 0.1 mg/ml BSA (US sourced) and 0.05% sodium azide; *For IHC use only*	7 ml

Bulk quote request

Availability	1-3 business days
Species Reactivity	Human
Format	Purified
Clonality	Monoclonal (mouse origin)
Isotype	Mouse IgG1, kappa
Clone Name	CDLA271
Purity	Protein G affinity chromatography
UniProt	P08138
Localization	Cell surface and cytoplasmic
Applications	Immunohistochemistry (FFPE) : 0.5-1ug/ml for 30 min at RT (1) Prediluted IHC Only Format : incubate for 30 min at RT (2)
Limitations	This CD271 antibody is available for research use only.



IHC testing of FFPE human melanoma with CD271 antibody.



IHC testing of FFPE human melanoma with CD271 antibody.

Description

CD271/NGFR plays a role in the regulation of the translocation of GLUT4 to the cell surface in adipocytes and skeletal muscle cells in response to insulin, probably by regulating RAB31 activity, and thereby contributes to the regulation of insulin-dependent glucose uptake (By similarity). Low affinity receptor which can bind to NGF, BDNF, NT-3, and NT-4. Can mediate cell survival as well as cell death of neural cells. Necessary for the circadian oscillation of the clock genes ARNTL/BMAL1, PER1, PER2 and NR1D1 in the suprachiasmatic nucleus (SCN) of the brain and in liver and of the genes involved in glucose and lipid metabolism in the liver. [UniProt]

Application Notes

Optimal dilution of the CD271 antibody should be determined by the researcher.

1. Staining of formalin-fixed tissues requires boiling tissue sections in 10mM Citrate buffer, pH 6.0, for 10-20 min followed by cooling at RT for 20 min
2. The prediluted format is supplied in a dropper bottle and is optimized for use in IHC. After epitope retrieval step (if required), drip mAb solution onto the tissue section and incubate at RT for 30 min.

Immunogen

Recombinant human protein was used as the immunogen for the CD271 antibody.

Storage

Store the CD271 antibody at 2-8°C (with azide) or aliquot and store at -20°C or colder (without azide).