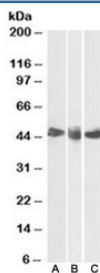


CD27 Antibody for WB / Lymphoid Expression CD27 Western Blot Antibody (R35484)

Catalog No.	Formulation	Size
R35484-100UG	0.5 mg/ml in 1X TBS, pH7.3, with 0.5% BSA (US sourced) and 0.02% sodium azide	100 ug

[Bulk quote request](#)

Availability	1-3 business days
Species Reactivity	Human
Format	Antigen affinity purified
Host	Goat
Clonality	Polyclonal (goat origin)
Isotype	Goat Ig
Purity	Antigen affinity
Gene ID	939
Localization	Cytoplasmic, membranous
Applications	Western Blot : 0.3-1ug/ml ELISA (peptide) LOD : 1:128000
Limitations	This CD27 Antibody for WB / Lymphoid Expression CD27 Western Blot Antibody is available for research use only.



CD27 Antibody for WB. Western blot analysis of CD27 / TNFRSF7 expression in human lymphoid tissues using Lymphoid Expression CD27 Western Blot Antibody. Lane A: human spleen lysate, Lane B: human tonsil lysate, Lane C: human thymus lysate. A band is detected at approximately 45 kDa, consistent with the glycosylated form of CD27, alongside a lower predicted molecular weight of approximately 29 kDa for the core protein. CD27 is a glycosylated receptor, and the observed higher molecular weight band reflects N-linked glycosylation commonly present in lymphocyte-derived tissues. The consistent signal across spleen, tonsil, and thymus aligns with the known enrichment of CD27 in T cells and memory B cells.

Description

CD27, also known as TNF receptor superfamily member 7 (TNFRSF7), is a glycosylated transmembrane receptor expressed predominantly on T lymphocytes, memory B cells, and subsets of natural killer cells, where it functions as a

key regulator of immune activation and differentiation. CD27 Antibody for WB / Lymphoid Expression CD27 Western Blot Antibody is uniquely positioned for evaluating CD27 protein expression in immune-rich tissues, enabling biologically relevant detection of this receptor in spleen, tonsil, and thymus lysates. CD27 antibody reagents are widely used in western blot to confirm expression patterns and assess post-translational modifications associated with immune receptor function.

CD27 antibody, also referred to as TNFRSF7 antibody or CD27 lymphocyte marker antibody in the literature, is particularly valuable for studying tissue-specific immune expression. In western blot applications, CD27 is commonly detected as both an unmodified core protein and higher molecular weight glycosylated forms, reflecting its maturation and surface localization in lymphocytes. These characteristic banding patterns provide important confirmation of protein identity in immune-derived samples.

CD27 Antibody for WB / Lymphoid Expression CD27 Western Blot Antibody demonstrates clear detection of CD27 protein in human lymphoid tissues, including spleen, tonsil, and thymus, which are enriched for CD27-positive lymphocyte populations. These tissues represent biologically relevant sources for validating CD27 expression and support the expected enrichment of this receptor in adaptive immune compartments.

In western blot assays, a band is detected at approximately 29 kDa, consistent with the predicted molecular weight of CD27, alongside an additional band near 45 kDa corresponding to glycosylated CD27. The presence of both bands reflects normal post-translational processing and is consistent with the biology of glycosylated immune receptors. This dual-band pattern is a key feature supporting accurate identification of CD27 in lymphoid tissue lysates.

The goat polyclonal antibody format enables recognition of multiple epitopes on the CD27 protein, enhancing detection sensitivity in complex tissue lysates and supporting robust signal across samples with variable expression levels. This makes it particularly well suited for western blot analysis of immune tissues where CD27 expression may vary depending on cellular composition and activation state.

Overall, CD27 Antibody for WB / Lymphoid Expression CD27 Western Blot Antibody provides reliable detection of CD27 protein in human lymphoid tissues, with banding patterns that reflect both unmodified and glycosylated forms, supporting its use in studies of immune cell biology and protein expression analysis.

This antibody is part of a broader [CD27 antibody](#) collection designed to support diverse immunological research applications.

Application Notes

Optimal dilution of the CD27 Antibody for WB / Lymphoid Expression CD27 Western Blot Antibody should be determined by the researcher.

Immunogen

Amino acids QTLADFRQLPARTLS were used as the immunogen for this CD27 antibody.

Storage

Aliquot and store the CD27 antibody at -20°C.

Alternate Names

TNFRSF7 antibody, CD27 western blot antibody, CD27 lymphoid tissue antibody for WB, CD27 immune cell marker antibody, CD27 protein expression antibody

