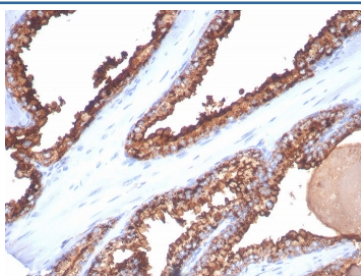


CD26 Antibody / Dipeptidyl peptidase 4 [clone DPP4/7415] (V4920)

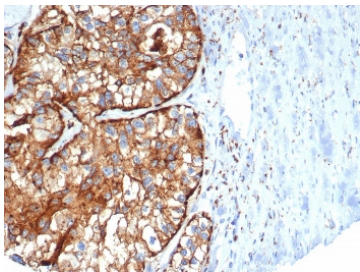
Catalog No.	Formulation	Size
V4920-100UG	0.2 mg/ml in 1X PBS with 0.1 mg/ml BSA (US sourced), 0.05% sodium azide	100 ug
V4920-20UG	0.2 mg/ml in 1X PBS with 0.1 mg/ml BSA (US sourced), 0.05% sodium azide	20 ug
V4920SAF-100UG	1 mg/ml in 1X PBS; BSA free, sodium azide free	100 ug

[Bulk quote request](#)

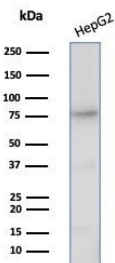
Availability	1-3 business days
Species Reactivity	Human
Format	Purified
Clonality	Monoclonal (mouse origin)
Isotype	Mouse IgG2, kappa
Clone Name	DPP4/7415
Purity	Protein A/G affinity
UniProt	P27487
Localization	Cell Surface
Applications	Western Blot : 1-2ug/ml Immunohistochemistry (FFPE) : 1-2ug/ml for 30 min at RT
Limitations	This CD26 antibody is available for research use only.



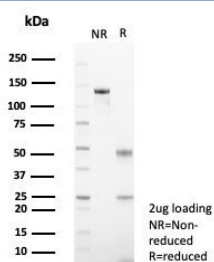
IHC staining of FFPE human prostate cancer tissue with CD26 antibody (clone DPP4/7415). HIER: boil tissue sections in pH 9 10mM Tris with 1mM EDTA for 20 min and allow to cool before testing.



IHC staining of FFPE human kidney cancer tissue with CD26 antibody (clone DPP4/7415). HIER: boil tissue sections in pH 9 10mM Tris with 1mM EDTA for 20 min and allow to cool before testing.



Western blot testing of human HepG2 cell lysate with CD26 antibody (clone DPP4/7415). Predicted molecular weight: 88-110 kDa depending on glycosylation level.



SDS-PAGE analysis of purified, BSA-free CD26 antibody (clone DPP4/7415) as confirmation of integrity and purity.

Description

Recognizes a glycoprotein of 110kDa, identified as CD26 (Workshop VI; Code: N-L039). It is an atypical serine protease belonging to the prolyl oligopeptidase family. It is expressed on lymphocyte cells and is upregulated during T-cell activation. CD26 is also expressed on activated B cells and natural killer cells and abundantly on epithelia. CD26 is implicated in a variety of biological functions including T-cell activation, cell adhesion with extracellular matrix such as fibronectin or collagens, and in HIV infection. Cross-linking of CD26 using this antibody dramatically enhances the anti-CD3-induced IL-2 production. In Western blotting, this mAb reacts with only glycosylated CD26, but not with the deglycosylated form. It does not prevent ADA binding to CD26.

Application Notes

Optimal dilution of the CD26 antibody should be determined by the researcher.

Immunogen

A recombinant partial protein sequence (within amino acids 1-200) from the human protein was used as the immunogen for the CD26 antibody.

Storage

Aliquot the CD26 antibody and store frozen at -20oC or colder. Avoid repeated freeze-thaw cycles.

