

## CD25 Antibody [clone 143-13] (V2631)

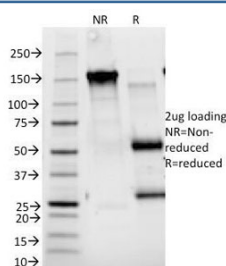
Catalog No.	Formulation	Size
V2631-100UG	0.2 mg/ml in 1X PBS with 0.1 mg/ml BSA (US sourced) and 0.05% sodium azide	100 ug
V2631-20UG	0.2 mg/ml in 1X PBS with 0.1 mg/ml BSA (US sourced) and 0.05% sodium azide	20 ug
V2631SAF-100UG	1 mg/ml in 1X PBS; BSA free, sodium azide free	100 ug



Citations (7)

[Bulk quote request](#)

Availability	1-3 business days
Species Reactivity	Human
Format	Purified
Clonality	Monoclonal (mouse origin)
Isotype	Mouse IgG1, kappa
Clone Name	143-13
Purity	Protein G affinity chromatography
UniProt	P01589
Localization	Cell surface, Cytoplasmic
Applications	Functional Studies (order BSA/sodium Azide-free Format) : Flow Cytometry : 1-2ug/10 <sup>6</sup> cells Immunofluorescence : 1-2ug/ml
Limitations	This CD25 antibody is available for research use only.



SDS-PAGE Analysis of Purified, BSA-Free CD25 Antibody (clone 143-13). Confirmation of Integrity and Purity of the Antibody.

## Description

Recognizes a protein of 55 kDa, identified as CD25 (Workshop IV; Code A27). CD25 is expressed on activated T- and B-cells and activated monocytes/macrophages. With respect to lymphomas, CD25 is present on malignant cells of Hodgkins disease, HTLV-1+ adult T-cell leukemia, cutaneous T-cell lymphoma, and hair cell leukemia. Increased levels of soluble CD25 are observed in the leukemias/lymphomas and inflammatory/ autoimmune diseases. CD25 molecule alone appears to function as a low affinity receptor and associates with CD122 (IL-2R b-chain, p75) and CD132 (common g-chain) to form the high affinity IL-2 receptor complex. CD25 antibodies detect three epitope regions, A, B and C. This mAb recognizes the epitope B, which is located at residue 3-104 of CD25 and can effectively block IL-2 binding to CD25.

## Application Notes

Optimal dilution of the CD25 antibody should be determined by the researcher.

## Immunogen

Stimulated human leukocytes were used as the immunogen for the CD25 antibody.

## Storage

Store the CD25 antibody at 2-8oC (with azide) or aliquot and store at -20oC or colder (without azide).