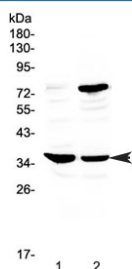


CD23 Antibody (RQ4216)

Catalog No.	Formulation	Size
RQ4216	0.5mg/ml if reconstituted with 0.2ml sterile DI water	100 ug

Bulk quote request

Availability	1-3 business days
Species Reactivity	Rat
Predicted Reactivity	Human
Format	Antigen affinity purified
Clonality	Polyclonal (rabbit origin)
Isotype	Rabbit IgG
Purity	Antigen affinity purified
Buffer	Lyophilized from 1X PBS with 2% Trehalose and 0.025% sodium azide
UniProt	P06734
Applications	Western Blot : 0.5-1ug/ml Direct ELISA : 0.1-0.5ug/ml
Limitations	This CD23 antibody is available for research use only.



Western blot testing of rat 1) spleen and 2) thymus tissue with CD23 antibody at 0.5ug/ml. Expected molecular weight: 37-45 kDa.

Description

Low-affinity receptor for immunoglobulin E (IgE) and CR2/CD21. Has essential roles in the regulation of IgE production and in the differentiation of B-cells (it is a B-cell-specific antigen). [UniProt]

Application Notes

Optimal dilution of the CD23 antibody should be determined by the researcher.

Immunogen

A recombinant human protein corresponding to amino acids D48-R284 was used as the immunogen for the CD23 antibody.

Storage

After reconstitution, the CD23 antibody can be stored for up to one month at 4°C. For long-term, aliquot and store at -20°C. Avoid repeated freezing and thawing.