

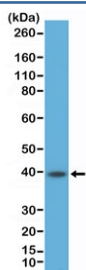
CD23 Antibody [clone RM406] (R20422)

Catalog No.	Formulation	Size
R20422-0.1ML	Antibody in PBS with 50% glycerol, 1% BSA and 0.09% sodium azide	100 ul

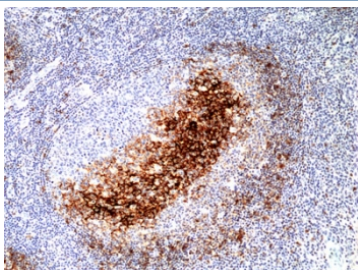
Recombinant **RABBIT MONOCLONAL**

[Bulk quote request](#)

Availability	1-3 business days
Species Reactivity	Human
Format	Purified
Host	Rabbit
Clonality	Recombinant Rabbit Monoclonal
Isotype	Rabbit IgG
Clone Name	RM406
Purity	Protein A purified from animal origin-free supernatant
UniProt	P06734
Localization	Cell surface
Applications	Immunohistochemistry (FFPE) : 1:100-1:200 Western Blot : 1:500-1:1000
Limitations	This recombinant CD23 antibody is available for research use only.



Western blot testing of human Raji cell lysate with recombinant CD23 antibody at 1:500 dilution. Expected molecular weight: 37~45 kDa.



IHC staining of FFPE human tonsil tissue with recombinant CD23 antibody at 1:200.

Description

This antibody reacts to human to CD23.

Explore our central [CD23 antibody resource page](#) for additional western blot, immunohistochemistry, and microarray specificity validation data supporting studies of B-cell activation, germinal center biology, and IgE receptor signaling pathways.

Application Notes

The stated application concentrations are suggested starting points. Titration of the recombinant CD23 antibody may be required due to differences in protocols and secondary/substrate sensitivity.

Immunogen

A peptide corresponding to residues near the C-terminus of human CD23 was used as the immunogen for the recombinant CD23 antibody.

Storage

Store the recombinant CD23 antibody at -20oC.