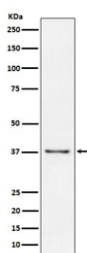


CD23 Antibody [clone ADIC-6] (RQ5161)

Catalog No.	Formulation	Size
RQ5161	Antibody in PBS with 0.02% sodium azide, 50% glycerol and 0.4-0.5mg/ml BSA	100 ul

[Bulk quote request](#)

Availability	1-2 weeks
Species Reactivity	Human
Format	Purified
Clonality	Rabbit Monoclonal
Isotype	Rabbit IgG
Clone Name	ADIC-6
Purity	Affinity purified
UniProt	P06734
Applications	Western Blot : 1:500-1:1000
Limitations	This CD23 antibody is available for research use only.



Western blot testing of human Raji cell lysate with CD23 antibody. Expected molecular weight: 37-45 kDa.

Description

The protein encoded by the FCER2 gene is a B-cell specific antigen, and a low-affinity receptor for IgE. It has essential roles in B cell growth and differentiation, and the regulation of IgE production. This protein also exists as a soluble secreted form, then functioning as a potent mitogenic growth factor. [RefSeq]

Application Notes

Optimal dilution of the CD23 antibody should be determined by the researcher.

Immunogen

A synthetic peptide specific to human CD23 / FCER2 was used as the immunogen for the CD23 antibody.

Storage

Store the CD23 antibody at -20oC.