

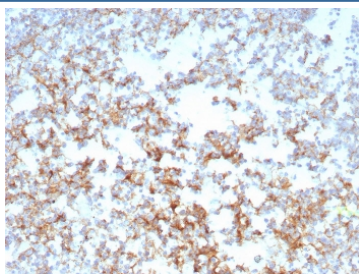
CD21 Antibody [clone CR2/8769R] (V4780)

Catalog No.	Formulation	Size
V4780-100UG	0.2 mg/ml in 1X PBS with 0.1 mg/ml BSA (US sourced), 0.05% sodium azide	100 ug
V4780-20UG	0.2 mg/ml in 1X PBS with 0.1 mg/ml BSA (US sourced), 0.05% sodium azide	20 ug
V4780SAF-100UG	1 mg/ml in 1X PBS; BSA free, sodium azide free	100 ug

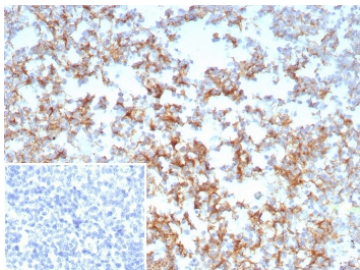
Recombinant **RABBIT MONOCLONAL**

[Bulk quote request](#)

Availability	1-3 business days
Species Reactivity	Human
Format	Purified
Host	Rabbit
Clonality	Recombinant Rabbit Monoclonal
Isotype	Rabbit IgG, kappa
Clone Name	CR2/8769R
Purity	Protein A/G affinity
UniProt	P20023
Localization	Cell Surface
Applications	Immunohistochemistry (FFPE) : 1-2ug/ml for 30 min at RT
Limitations	This CD21 antibody is available for research use only.



IHC staining of FFPE human tonsil tissue with CD21 antibody (clone CR2/8769R). HIER: boil tissue sections in pH 9 10mM Tris with 1mM EDTA for 20 min and allow to cool before testing.



IHC staining of FFPE human tonsil tissue with CD21 antibody (clone CR2/8769R). Inset: PBS used in place of primary Ab (secondary Ab negative control). HIER: boil tissue sections in pH 9 10mM Tris with 1mM EDTA for 20 min and allow to cool before testing.

Description

CD21 also known as complement C3d receptor, Epstein-Barr virus receptor, and complement receptor type 2 (CR2), is a protein that in humans is encoded by the CR2 gene. This protein is involved in the complement system. It binds to iC3b (inactive derivative of C3b), C3dg, or C3d. B cells have CR2 receptors on their surfaces, allowing the complement system to play a role in B-cell activation and maturation. It is expressed by follicular dendritic cells (FDC) and mature B cells, as well as by several types of epithelial cells. CD21 is useful in the identification of follicular dendritic cell matrix found in normal lymph node and tonsillar tissue, and also useful in identifying abnormal.

Application Notes

Optimal dilution of the CD21 antibody should be determined by the researcher.

Immunogen

A recombinant fragment corresponding to the C-terminal of human CD21 was used as the immunogen for the CD21 antibody.

Storage

Aliquot the CD21 antibody and store frozen at -20°C or colder. Avoid repeated freeze-thaw cycles.