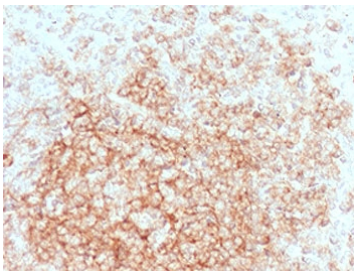


CD21 Antibody [clone CDLA21-1] (V3779)

Catalog No.	Formulation	Size
V3779-100UG	0.2 mg/ml in 1X PBS with 0.1 mg/ml BSA (US sourced) and 0.05% sodium azide	100 ug
V3779-20UG	0.2 mg/ml in 1X PBS with 0.1 mg/ml BSA (US sourced) and 0.05% sodium azide	20 ug
V3779SAF-100UG	1 mg/ml in 1X PBS; BSA free, sodium azide free	100 ug

Bulk quote request

Availability	1-3 business days
Species Reactivity	Human
Format	Purified
Host	Mouse
Clonality	Monoclonal (mouse origin)
Isotype	Mouse IgG1, kappa
Clone Name	CDLA21-1
Purity	Protein G affinity chromatography
UniProt	P20023
Localization	Cell surface
Applications	Immunohistochemistry (FFPE) : 1-2ug/ml for 30 minutes at RT
Limitations	This CD21 antibody is available for research use only.



CD21 Antibody Lymphoid Follicle IHC. Immunohistochemistry testing of FFPE human tonsil tissue with CD21 antibody (clone CDLA21-1). HIER: boil tissue sections in pH6, 10mM citrate buffer, for 10-20 min followed by cooling at RT for 20 min.

Description

CD21/CR2 is expressed strongly on mature B cells, follicular dendritic cells and weakly on immature thymocytes and T lymphocytes. In B-cell ontogeny, CD21 appears after the pre-B-stage, is maintained during peripheral B-cell development and is lost upon terminal differentiation into plasma cells. This mAb is highly specific to CR2 and shows no cross-reaction with CR1.

For a validated reference of CD21 expression across B cells and follicular dendritic cell networks, see [CD21 antibody clone CR2/2754](#) with supporting multi-application data.

Application Notes

The stated application concentrations are suggested starting points. Titration of the CD21 antibody may be required due to differences in protocols and secondary/substrate sensitivity.

Immunogen

A portion of amino acids 44-196 were used as the immunogen for the CD21 antibody.

Storage

Store the CD21 antibody at 2-8oC (with azide) or aliquot and store at -20oC or colder (without azide).