

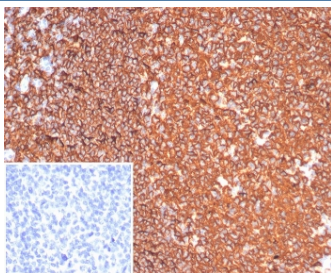
## CD20 Antibody Recombinant Rabbit MAb [clone MS4A1/6993R] (V4167)

Catalog No.	Formulation	Size
V4167-100UG	0.2 mg/ml in 1X PBS with 0.1 mg/ml BSA (US sourced), 0.05% sodium azide	100 ug
V4167-20UG	0.2 mg/ml in 1X PBS with 0.1 mg/ml BSA (US sourced), 0.05% sodium azide	20 ug
V4167SAF-100UG	1 mg/ml in 1X PBS; BSA free, sodium azide free	100 ug

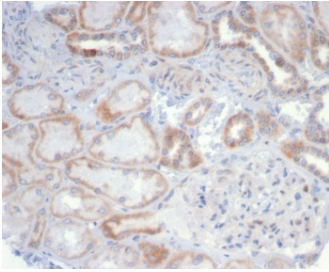
Recombinant **RABBIT MONOCLONAL**

[Bulk quote request](#)

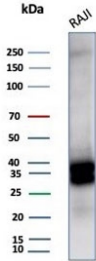
<b>Availability</b>	1-3 business days
<b>Species Reactivity</b>	Human
<b>Format</b>	Purified
<b>Host</b>	Rabbit
<b>Clonality</b>	Recombinant Rabbit Monoclonal
<b>Isotype</b>	Rabbit IgG, kappa
<b>Clone Name</b>	MS4A1/6993R
<b>Purity</b>	Protein A affinity
<b>UniProt</b>	P11836
<b>Localization</b>	Cell surface
<b>Applications</b>	Western Blot : 1-2ug/ml Immunohistochemistry (FFPE) : 1-2ug/ml for 30 minutes at RT
<b>Limitations</b>	This CD20 antibody is available for research use only.



Immunohistochemistry analysis of CD20 Antibody Recombinant Rabbit MAb in human tonsil tissue. FFPE human tonsil demonstrates strong membranous HRP-DAB brown staining in B lymphocytes within germinal centers and follicular regions, consistent with CD20/MS4A1 surface expression, while surrounding T-cell zones show minimal staining. The inset image shows the PBS negative control with no specific signal. Antigen retrieval was performed by boiling tissue sections in pH 9 10mM Tris with 1mM EDTA for 20 minutes followed by cooling prior to incubation with CD20 antibody (clone MS4A1/6993R).



IHC staining of FFPE human kidney tissue with CD20 antibody (clone MS4A1/6993R).  
HIER: boil tissue sections in pH 9 10mM Tris with 1mM EDTA for 20 min and allow to cool before testing.



Western blot testing of human Raji cell lysate with CD20 antibody (clone MS4A1/6993R).  
Predicted molecular weight ~33 kDa.

## Description

CD20 antibody recognizes CD20, also known as Membrane spanning 4-domains subfamily A member 1, a B-cell specific transmembrane phosphoprotein encoded by the MS4A1 gene. CD20 is localized to the plasma membrane of B lymphocytes, where it regulates B-cell activation, proliferation, and calcium signaling. CD20 Antibody Recombinant Rabbit MAb supports research in B-cell biology, hematologic malignancies, and immune system modulation.

MS4A1 is located on chromosome 11q12.2 and encodes a protein containing four transmembrane domains with cytoplasmic N- and C-termini. CD20 is expressed from the late pre-B-cell stage through mature B cells but is absent on hematopoietic stem cells and plasma cells. This stage-restricted expression pattern makes CD20 one of the most widely used markers for identifying B-cell populations in lymphoid tissues such as tonsil, spleen, and lymph node.

Functionally, CD20 associates with the B-cell receptor complex and contributes to calcium influx following antigen stimulation. Although it lacks a defined soluble ligand, CD20 participates in membrane signaling microdomains that regulate B-cell activation and cell cycle progression. Dysregulated CD20 expression is observed in B-cell non-Hodgkin lymphoma, chronic lymphocytic leukemia, and other lymphoproliferative disorders. CD20 Antibody Recombinant Rabbit MAb enables evaluation of CD20 distribution and expression levels in normal and malignant tissues.

CD20 is also a clinically significant therapeutic target. Anti-CD20 monoclonal antibodies are widely used to deplete B cells through complement activation, antibody-dependent cellular cytotoxicity, and apoptosis induction. Understanding CD20 density, membrane organization, and regulation remains important for studying therapeutic resistance and response mechanisms. Clone MS4A1/6993R is engineered as a recombinant rabbit monoclonal antibody to provide consistent specificity and reproducibility in CD20 detection.

By targeting a well-established B-cell marker, CD20 Antibody Recombinant Rabbit MAb supports investigations into lymphoma biology, immune regulation, and translational oncology research.

## Application Notes

Optimal dilution of the CD20 antibody should be determined by the researcher.

## Immunogen

A recombinant partial protein (within amino acids 97-297) from the human protein was used as the immunogen for the CD20 antibody.

## Storage

Aliquot the CD20 antibody and store frozen at -20oC or colder. Avoid repeated freeze-thaw cycles.