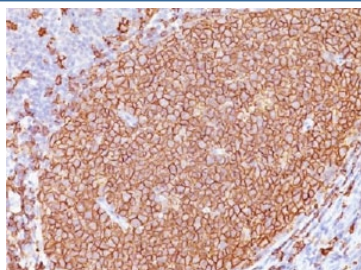


CD20 Antibody Cocktail [clone L26 + IGEL/733] (V2392)

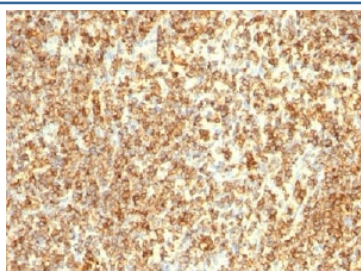
Catalog No.	Formulation	Size
V2392-0.5ML	Bioreactor concentrate with 0.05% sodium azide	0.5 ml
V2392-0.1ML	Bioreactor concentrate with 0.05% sodium azide	0.1 ml

Bulk quote request

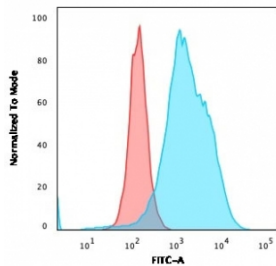
Species Reactivity	Human
Format	Bioreactor concentrate
Clonality	Monoclonal (mouse origin)
Isotype	Mouse IgG2a, kappa
Clone Name	L26 + IGEL/733
Buffer	1X PBS, pH 7.4
UniProt	P11836
Localization	Predominantly cell surface with some cytoplasmic
Applications	Flow Cytometry : 5-10ul/10 ⁶ cells Immunofluorescence : 1:50-1:100 Immunohistochemistry (FFPE) : 1:100-1:200 for 30 min at RT
Limitations	This CD20 antibody cocktail is available for research use only.



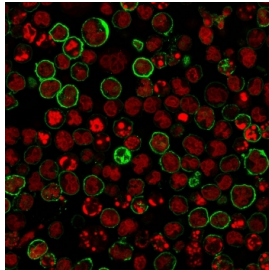
IHC testing of CD20 antibody and FFPE human tonsil tissue. HIER: boil tissue sections in pH 9 10mM Tris with 1mM EDTA for 20 min and allow to cool before testing.



IHC testing of CD20 antibody and human lymphoma tissue. HIER: boil tissue sections in pH 9 10mM Tris with 1mM EDTA for 20 min and allow to cool before testing.



Flow cytometry testing of human Raji cells with CD20 antibody cocktail (clones L26 + IGEL/733); Red=isotype control, Blue= CD20 antibody cocktail.



Immunofluorescent staining of human Raji cells with CD20 antibody cocktail (clones L26 + IGEL/733, green) and Reddot nuclear stain (red).

Description

This antibody recognizes a protein of 33-37kDa, identified as CD20 (Workshop V; Code CD20.12). The antibody recognizes the extracellular domain of the protein. The epitope is similar to or identical to that recognized by other CD20 antibodies including Leu-16 and B1. This antibody can be used for immunophenotyping of leukemia and malignant cells, B lymphocyte detection in peripheral blood, Bcell localization in tissues and B lymphocyte purification by immunosorbent methods. CD20 is a non-Ig differentiation antigen of Bcells and its expression is restricted to normal and neoplastic Bcells, being absent from all other leukocytes and tissues. It is expressed by pre Bcells and persists during all stages of Bcell maturation but is lost upon terminal differentiation into plasma cells. Protein passes through the membrane 4 times with both ends in cytoplasm and exposes one short and one longer loop to the external environment. CD20 is not glycosylated in resting Bcells and its cytoplasmic domains are differentially phosphorylated upon activation. It acts as a calcium channel involved in Bcell activation and cell cycle progression.

Application Notes

The concentration stated for each application is a general starting point. Variations in protocols, secondaries and substrates may require the CD20 antibody cocktail to be titrated up or down for optimal performance.

Immunogen

Human tonsil B cells (L26) and recombinant protein (IGEL/733) were used as the immunogen for this CD20 antibody cocktail.

Storage

CD20 antibody cocktail with azide can be stored at 2-8°C. The azide-free format should be aliquoted and stored at -20°C or colder.

References (4)

