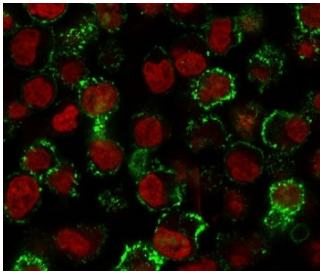


## CD20 Antibody [clone CDLA20-1] (V7096)

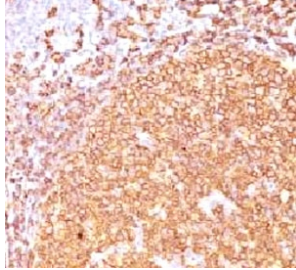
Catalog No.	Formulation	Size
V7096-100UG	0.2 mg/ml in 1X PBS with 0.1 mg/ml BSA (US sourced) and 0.05% sodium azide	100 ug
V7096-20UG	0.2 mg/ml in 1X PBS with 0.1 mg/ml BSA (US sourced) and 0.05% sodium azide	20 ug
V7096SAF-100UG	1 mg/ml in 1X PBS; BSA free, sodium azide free	100 ug
V7096IHC-7ML	Prediluted in 1X PBS with 0.1 mg/ml BSA (US sourced) and 0.05% sodium azide; *For IHC use only*	7 ml

[Bulk quote request](#)

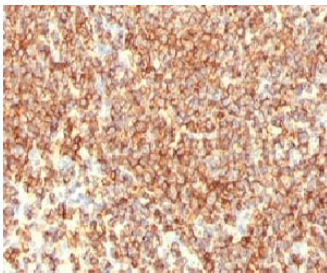
<b>Species Reactivity</b>	Human
<b>Format</b>	Purified
<b>Host</b>	Mouse
<b>Clonality</b>	Monoclonal (mouse origin)
<b>Isotype</b>	Mouse IgG2a, kappa
<b>Clone Name</b>	CDLA20-1
<b>Purity</b>	Protein G affinity chromatography
<b>Buffer</b>	1X PBS, pH 7.4
<b>UniProt</b>	P11836
<b>Localization</b>	Predominantly cell surface with some cytoplasmic
<b>Applications</b>	Flow Cytometry : 0.5-1ug/million cells Immunofluorescence : 0.5-1ug/ml Immunohistochemistry (FFPE) : 0.5-1ug/ml for 30 min at RT Prediluted IHC Only Format : incubate for 30 min at RT (1)
<b>Limitations</b>	This CD20 antibody is available for research use only.



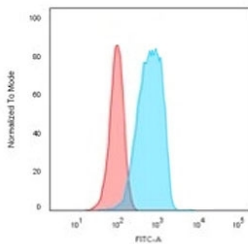
Immunofluorescent staining of human Raji cells with CD20 antibody (clone CDLA20-1, green) and Reddot nuclear stain (red).



IHC staining of FFPE human tonsil tissue with CD20 antibody (clone CDLA20-1). HIER: boil tissue sections in pH6, 10mM citrate buffer, for 10-20 min and allow to cool before testing.



IHC staining of FFPE human lymphoma tissue with CD20 antibody (clone CDLA20-1). HIER: boil tissue sections in pH6, 10mM citrate buffer, for 10-20 min and allow to cool before testing.



Flow cytometry testing of human Raji cells with CD20 antibody (clone CDLA20-1); Red=isotype control, Blue= CD20 antibody.

## Description

CD20 is a non-Ig differentiation antigen of B-cells and its expression is restricted to normal and neoplastic B-cells, being absent from all other leukocytes and tissues. It is expressed by pre B-cells and persists during all stages of maturation but is lost upon terminal differentiation into plasma cells. The protein passes through the membrane 4 times with both ends in cytoplasm and exposes one short and one longer loop to the external environment. It acts as a calcium channel involved in B-cell activation and cell cycle progression.

## Application Notes

Titring of the CD20 antibody may be required for optimal performance.

1. The prediluted format is supplied in a dropper bottle and is optimized for use in IHC. After epitope retrieval step (if required), drip mAb solution onto the tissue section and incubate at RT for 30 min.

## Immunogen

Recombinant CD20 protein was used as the immunogen for this CD20 antibody. The epitope is known to be extracellular.

## Storage

CD20 antibody with azide can be stored at 2-8°C. The azide-free format should be aliquoted and stored at -20°C or colder.