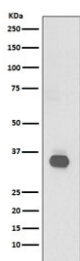


CD20 Antibody [clone AIA-13] (RQ5378)

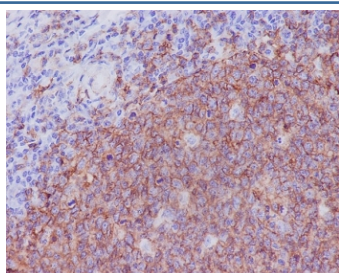
Catalog No.	Formulation	Size
RQ5378	Antibody in PBS with 0.02% sodium azide, 50% glycerol and 0.4-0.5mg/ml BSA	100 ul

[Bulk quote request](#)

Availability	1-2 weeks
Species Reactivity	Human
Format	Purified
Clonality	Rabbit Monoclonal
Isotype	Rabbit IgG
Clone Name	AIA-13
Purity	Affinity purified
UniProt	P11836
Localization	Predominantly cell surface with some cytoplasmic
Applications	Western Blot : 1:500-1:2000 Immunohistochemistry (FFPE) : 1:50-1:200
Limitations	This CD20 antibody is available for research use only.



Western blot testing of human Raji cell lysate with CD20 antibody. Predicted molecular weight ~33 kDa.



IHC staining of FFPE human tonsil tissue with CD20 antibody. HIER: boil tissue sections in pH6, 10mM citrate buffer, for 10-20 min and allow to cool before testing.

Description

The MS4A1 gene encodes a member of the membrane-spanning 4A gene family. Members of this nascent protein family are characterized by common structural features and similar intron/exon splice boundaries and display unique expression patterns among hematopoietic cells and nonlymphoid tissues. This gene encodes a B-lymphocyte surface molecule which plays a role in the development and differentiation of B-cells into plasma cells. This family member is localized to 11q12, among a cluster of family members. Alternative splicing of this gene results in two transcript variants which encode the same protein. [RefSeq]

Application Notes

Optimal dilution of the CD20 antibody should be determined by the researcher.

Immunogen

A synthetic peptide specific to human CD20 / MS4A1 was used as the immunogen for the CD20 antibody.

Storage

Store the CD20 antibody at -20oC.