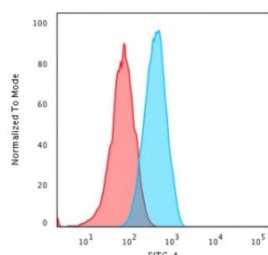


CD2 Antibody [clone UMCD2] (V2030)

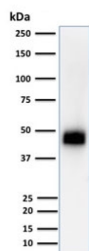
Catalog No.	Formulation	Size
V2030-100UG	0.2 mg/ml in 1X PBS with 0.1 mg/ml BSA (US sourced) and 0.05% sodium azide	100 ug
V2030-20UG	0.2 mg/ml in 1X PBS with 0.1 mg/ml BSA (US sourced) and 0.05% sodium azide	20 ug
V2030SAF-100UG	1 mg/ml in 1X PBS; BSA free, sodium azide free	100 ug

[Bulk quote request](#)

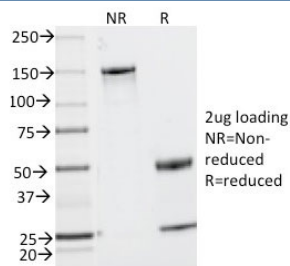
Availability	1-3 business days
Species Reactivity	Human
Format	Purified
Clonality	Monoclonal (mouse origin)
Isotype	Mouse IgG2a, kappa
Clone Name	UMCD2
Purity	Protein G purified antibody
Gene ID	914
Localization	Cell surface
Applications	Functional Studies : order BSA/sodium azide-free format Flow Cytometry : 1-2ug/million cells Immunofluorescence : 1-2ug/ml Western Blot : 2-4ug/ml
Limitations	This CD2 antibody is available for research use only.



Flow cytometry testing of human MOLT-4 cells with CD2 antibody (clone UMCD2); Red=isotype control, Blue= CD2 antibody.



Western blot testing of human Jurkat cells with CD2 antibody (clone UMCD2). Expected molecular weight: 38-50 kDa depending on level of glycosylation.



SDS-PAGE analysis of purified, BSA-free CD2 antibody (clone UMCD2) as confirmation of integrity and purity.

Description

CD2 interacts through its amino-terminal domain with the extracellular domain of CD58 (also designated CD2 ligand) to mediate cell adhesion. CD2/CD58 binding can enhance antigen-specific Tcell activation. CD2 is a transmembrane glycoprotein that is expressed on peripheral blood T lymphocytes, NK cells and thymocytes. CD58 is a heavily glycosylated protein with a broad tissue distribution in hematopoietic and other cells, including endothelium. Interaction between CD2 and its counter receptor LFA3 (CD58) on opposing cells optimizes immune system recognition, thereby facilitating communication between helper T lymphocytes and antigen-presenting cells, as well as between cytolytic effectors and target cells.

Application Notes

The concentration stated for each application is a general starting point. Variations in protocols, secondary antibody and substrates may require the CD2 antibody to be titrated up or down for optimal performance.

Immunogen

Human thymocytes/Sezary T cells were used as the immunogen for this CD2 antibody.

Storage

Store the CD2 antibody at 2-8oC (with azide) or aliquot and store at -20oC or colder (without azide).

Alternate Names

Erythrocyte receptor; LFA-2; LFA-3 receptor; Ly-37; Lymphocyte function antigen 2; Rosette receptor; SRBC; T-cell surface antigen CD2; T-cell surface antigen T11/Leu-5; T11

References (3)

