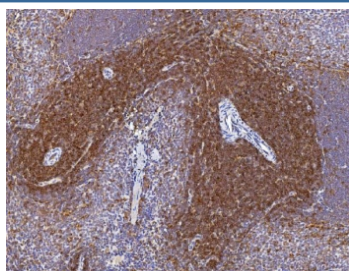


## Cd2 Antibody (RQ5800)

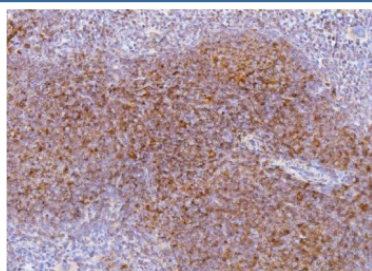
Catalog No.	Formulation	Size
RQ5800	0.5mg/ml if reconstituted with 0.2ml sterile DI water	100 ug

**Bulk quote request**

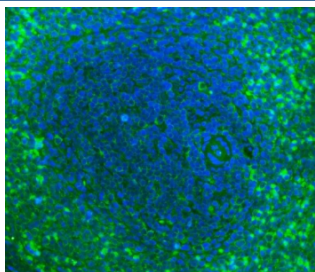
<b>Availability</b>	1-3 business days
<b>Species Reactivity</b>	Mouse, Rat
<b>Format</b>	Antigen affinity purified
<b>Clonality</b>	Polyclonal (rabbit origin)
<b>Isotype</b>	Rabbit IgG
<b>Purity</b>	Affinity purified
<b>Buffer</b>	Lyophilized from 1X PBS with 2% Trehalose and 0.025% sodium azide
<b>UniProt</b>	P08921
<b>Applications</b>	Immunohistochemistry (FFPE) : 1-2ug/ml Immunofluorescence (FFPE) : 5ug/ml Direct ELISA : 0.1-0.5ug/ml
<b>Limitations</b>	This Cd2 antibody is available for research use only.



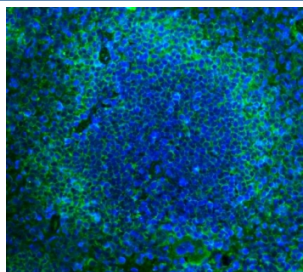
IHC staining of FFPE rat spleen with Cd2 antibody. HIER: boil tissue sections in pH8 EDTA for 20 min and allow to cool before testing.



IHC staining of FFPE mouse spleen with Cd2 antibody. HIER: boil tissue sections in pH8 EDTA for 20 min and allow to cool before testing.



Immunofluorescent staining of FFPE rat spleen with Cd2 antibody (green) and DAPI nuclear stain (blue). HIER: boil tissue sections in pH8 EDTA for 20 min and allow to cool before testing.



Immunofluorescent staining of FFPE mouse spleen with Cd2 antibody (green) and DAPI nuclear stain (blue). HIER: boil tissue sections in pH8 EDTA for 20 min and allow to cool before testing.

## Description

CD2 (cluster of differentiation 2) is a cell adhesion molecule found on the surface of T cells and natural killer (NK) cells. It has also been called T-cell surface antigen T11/Leu-5, LFA-2, LFA-3 receptor, erythrocyte receptor and rosette receptor. Monoclonal antibodies directed against CD2 inhibit the formation of rosettes with sheep erythrocytes, indicating that CD2 is the erythrocyte receptor or is closely associated with it. CD2 is one of the earliest T-cell markers, being present on more than 95% of thymocytes. Due to its structural characteristics, CD2 is a member of the immunoglobulin superfamily; it possesses two immunoglobulin-like domains in its extracellular portion. The localization of CD2 to 1p13 is established by in situ hybridization. CD2 interacts with other adhesion molecules, such as lymphocyte function-associated antigen-3 (LFA-3/CD58) in humans, or CD48 in rodents, which are expressed on the surfaces of other cells. With the use of transgenic mice, such an LCR is identified within the 3-prime flanking region of the human CD2 gene.

## Application Notes

Optimal dilution of the Cd2 antibody should be determined by the researcher.

## Immunogen

Recombinant rat protein (amino acids H34-K330) was used as the immunogen for the Cd2 antibody.

## Storage

After reconstitution, the Cd2 antibody can be stored for up to one month at 4°C. For long-term, aliquot and store at -20°C. Avoid repeated freezing and thawing.