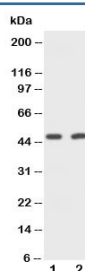


CD2 Antibody (R30833)

Catalog No.	Formulation	Size
R30833	0.5mg/ml if reconstituted with 0.2ml sterile DI water	100 ug

[Bulk quote request](#)

Availability	1-3 business days
Species Reactivity	Mouse, Rat
Format	Antigen affinity purified
Host	Rabbit
Clonality	Polyclonal (rabbit origin)
Isotype	Rabbit IgG
Purity	Antigen affinity
Buffer	Lyophilized from 1X PBS with 2.5% BSA and 0.025% sodium azide/thimerosal
UniProt	P08920
Applications	Western Blot : 0.5-1ug/ml
Limitations	This CD2 antibody is available for research use only.



Western blot testing of CD2 antibody and Lane 1: rat spleen; 2: mouse NIH3T3 cell lysate

Description

Cluster of differentiation 2 is a cell adhesion molecule found on the surface of T cells and natural killer (NK) cells. It has also been called T-cell surface antigen T11/Leu-5, LFA-2, LFA-3 receptor, erythrocyte receptor and rosette receptor. Monoclonal antibodies directed against CD2 inhibit the formation of rosettes with sheep erythrocytes, indicating that the protein is the erythrocyte receptor or is closely associated with it. It is one of the earliest T-cell markers, being present on more than 95% of thymocytes; it is also found on some natural killer cells but not on B lymphocytes. Due to its structural characteristics, CD2 is a member of the immunoglobulin superfamily; it possesses two immunoglobulin-like domains in its extracellular portion. CD2 interacts with other adhesion molecules, such as lymphocyte function-associated

antigen-3(LFA-3/CD58) in humans, or CD48 in rodents, which are expressed on the surfaces of other cells. With the use of transgenic mice, such an LCR was identified within the 3-prime flanking region of the human gene.

Application Notes

The stated application concentrations are suggested starting amounts. Titration of the CD2 antibody may be required due to differences in protocols and secondary/substrate sensitivity.

Immunogen

An amino acid sequence from the middle region of mouse CD2 (FIFCICKRRKRNRRRKDEE) was used as the immunogen for this CD2 antibody.

Storage

After reconstitution, the CD2 antibody can be stored for up to one month at 4oC. For long-term, aliquot and store at -20oC. Avoid repeated freezing and thawing.