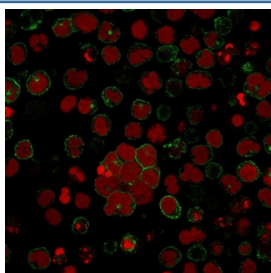


CD2 Antibody [clone LFA2/600] (V2952)

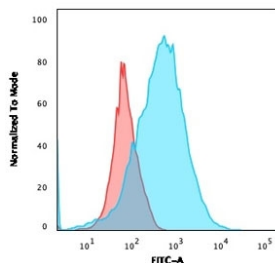
Catalog No.	Formulation	Size
V2952-100UG	0.2 mg/ml in 1X PBS with 0.1 mg/ml BSA (US sourced) and 0.05% sodium azide	100 ug
V2952-20UG	0.2 mg/ml in 1X PBS with 0.1 mg/ml BSA (US sourced) and 0.05% sodium azide	20 ug
V2952SAF-100UG	1 mg/ml in 1X PBS; BSA free, sodium azide free	100 ug

[Bulk quote request](#)

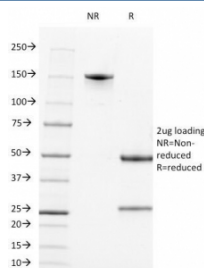
Availability	1-3 business days
Species Reactivity	Human
Format	Purified
Clonality	Monoclonal (mouse origin)
Isotype	Mouse IgG1, kappa
Clone Name	LFA2/600
Purity	Protein G affinity chromatography
UniProt	P06729
Localization	Cell surface
Applications	Flow Cytometry : 1-2ug/10 ⁶ cells Immunofluorescence : 1-2ug/ml
Limitations	This CD2 antibody is available for research use only.



Immunofluorescent staining of human Molt-4 cells with CD2 antibody (clone LFA2/600, green) and Reddot nuclear stain (red).



Flow cytometry staining of human Molt-4 cells with CD2 antibody (clone LFA2/600); Red=isotype control, Blue= CD2 antibody.



SDS-PAGE analysis of purified, BSA-free CD2 antibody (clone LFA2/600) as confirmation of integrity and purity.

Description

CD2 interacts through its amino-terminal domain with the extracellular domain of CD58 (also designated CD2 ligand) to mediate cell adhesion. CD2/CD58 binding can enhance antigen-specific T cell activation. CD2 is a transmembrane glycoprotein that is expressed on peripheral blood T lymphocytes, NK cells and thymocytes. CD58 is a heavily glycosylated protein with a broad tissue distribution in hematopoietic and other cells, including endothelium. Interaction between CD2 and its counter receptor LFA3 (CD58) on opposing cells optimizes immune system recognition, thereby facilitating communication between helper T lymphocytes and antigen-presenting cells, as well as between cytolytic effectors and target cells.

Application Notes

Optimal dilution of the CD2 antibody should be determined by the researcher.

Immunogen

Recombinant human protein was used as the immunogen for the CD2 antibody.

Storage

Store the CD2 antibody at 2-8oC (with azide) or aliquot and store at -20oC or colder (without azide).