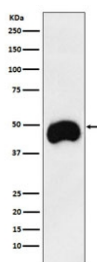


## CD2 Antibody / LFA-2 [clone AFBD-3] (RQ5156)

Catalog No.	Formulation	Size
RQ5156	Antibody in PBS with 0.02% sodium azide, 50% glycerol and 0.4-0.5mg/ml BSA	100 ul

[Bulk quote request](#)

Availability	1-2 weeks
Species Reactivity	Human
Format	Purified
Clonality	Rabbit Monoclonal
Isotype	Rabbit IgG
Clone Name	AFBD-3
Purity	Affinity purified
UniProt	P06729
Applications	Western Blot : 1:500-1:2000
Limitations	This CD2 antibody is available for research use only.



Western blot testing of human Jurkat cell lysate with CD2 antibody. Predicted molecular weight ~47 kDa.

### Description

The protein encoded by this gene is a surface antigen found on all peripheral blood T-cells. The encoded protein interacts with LFA-3 (CD58) on antigen presenting cells to optimize immune recognition. A locus control region (LCR) has been found in the 3' flanking sequence of this gene. [RefSeq]

### Application Notes

Optimal dilution of the CD2 antibody should be determined by the researcher.

## Immunogen

A synthetic peptide specific to human CD2 / CD2 was used as the immunogen for the CD2 antibody.

## Storage

Store the CD2 antibody at -20oC.