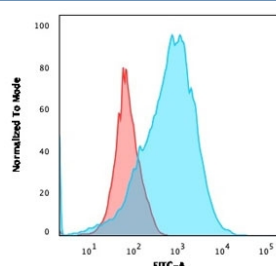


CD2 Antibody [clone BH1] (V2032CF488)

Catalog No.	Formulation	Size
V2032CF488-100T	500 ul at 0.1 mg/ml with 0.1 mg/ml BSA (US sourced), 0.05% sodium azide	100 Tests

Bulk quote request

Availability	1-3 business days
Species Reactivity	Human
Format	CF488 Conjugate
Clonality	Monoclonal (mouse origin)
Isotype	Mouse IgG2b, kappa
Clone Name	BH1
Purity	Protein G affinity chromatography
Applications	Flow Cytometry : 1-2ug/million cells Immunofluorescence : 1-3ug/ml
Limitations	This CD2 antibody is available for research use only.



Flow cytometry testing of human MOLT-4 cells with unlabeled CD2 antibody (clone BH1); Red=isotype control, Blue= CD2 antibody.

Description

CD2 interacts through its amino-terminal domain with the extracellular domain of CD58 (also designated CD2 ligand) to mediate cell adhesion. CD2/CD58 binding can enhance antigen-specific T cell activation. CD2 is a transmembrane glycoprotein that is expressed on peripheral blood T lymphocytes, NK cells and thymocytes. CD58 is a heavily glycosylated protein with a broad tissue distribution in hematopoietic and other cells, including endothelium. Interaction between CD2 and its counter receptor LFA3 (CD58) on opposing cells optimizes immune system recognition, thereby facilitating communication between helper T lymphocytes and antigen-presenting cells, as well as between cytolytic effectors and target cells.

Application Notes

Optimal dilution of the CD2 antibody should be determined by the researcher.

Immunogen

Human CD2 protein was used as the immunogen of the CD2 antibody.

Storage

Store the CD2 antibody at 2-8oC, protected from light.