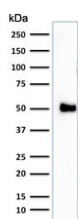


CD2 Antibody [clone 1E7E8.G4] (V2029)

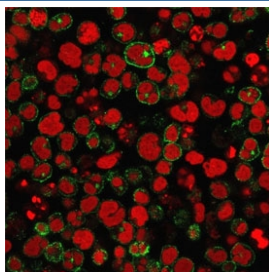
Catalog No.	Formulation	Size
V2029-100UG	0.2 mg/ml in 1X PBS with 0.1 mg/ml BSA (US sourced) and 0.05% sodium azide	100 ug
V2029-20UG	0.2 mg/ml in 1X PBS with 0.1 mg/ml BSA (US sourced) and 0.05% sodium azide	20 ug
V2029SAF-100UG	1 mg/ml in 1X PBS; BSA free, sodium azide free	100 ug

[Bulk quote request](#)

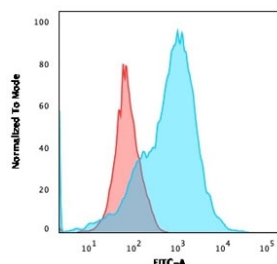
Species Reactivity	Human
Format	Purified
Clonality	Monoclonal (mouse origin)
Isotype	Mouse IgG2a, kappa
Clone Name	1E7E8.G4
Purity	Protein G affinity chromatography
Buffer	1X PBS, pH 7.4
Gene ID	914
Localization	Cell surface
Applications	Functional Studies (order BSA/sodium Azide-free Format) : Flow Cytometry : 1-2ug/10 ⁶ cells Immunofluorescence : 1-2ug/ml Western Blot : 1-2ug/ml
Limitations	This CD2 antibody is available for research use only.



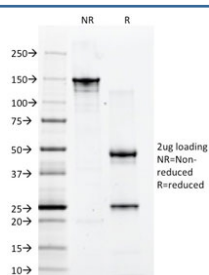
Western blot testing of human Jurkat cell lysate with CD2 antibody (clone 1E7E8.G4).
Expected molecular weight: 38-50 kDa depending on level of glycosylation.



Immunofluorescent staining of human Molt-4 cells with CD2 antibody (clone 1E7E8.G4, green) and Reddot nuclear stain (red).



Flow cytometry staining of human Molt-4 cells with CD2 antibody (clone 1E7E8.G4); Red=isotype control, Blue= CD2 antibody.



SDS-PAGE analysis of purified, BSA-free CD2 antibody (clone 1E7E8.G4) as confirmation of integrity and purity.

Description

CD2 interacts through its amino-terminal domain with the extracellular domain of CD58 (also designated CD2 ligand) to mediate cell adhesion. CD2/CD58 binding can enhance antigen-specific T cell activation. CD2 is a transmembrane glycoprotein that is expressed on peripheral blood T lymphocytes, NK cells and thymocytes. CD58 is a heavily glycosylated protein with a broad tissue distribution in hematopoietic and other cells, including endothelium. Interaction between CD2 and its counter receptor LFA3 (CD58) on opposing cells optimizes immune system recognition, thereby facilitating communication between helper T lymphocytes and antigen-presenting cells, as well as between cytolytic effectors and target cells.

Application Notes

The concentration stated for each application is a general starting point. Variations in protocols, secondaries and substrates may require the antibody to be titrated up or down for optimal performance.

Immunogen

Human thymocytes/Sezary T cells were used as the immunogen for this CD2 antibody.

Storage

Store the CD2 antibody at 2-8oC (with azide) or aliquot and store at -20oC or colder (without azide).

Alternate Names

Erythrocyte receptor; LFA-2; LFA-3 receptor; Ly-37; Lymphocyte function antigen 2; Rosette receptor; SRBC; T-cell surface antigen CD2; T-cell surface antigen T11/Leu-5; T11, CD2 antibody

References (3)

