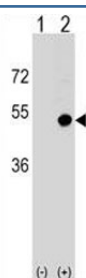


## CD1d Antibody (F45250)

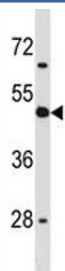
Catalog No.	Formulation	Size
F45250-0.4ML	In 1X PBS, pH 7.4, with 0.09% sodium azide	0.4 ml
F45250-0.08ML	In 1X PBS, pH 7.4, with 0.09% sodium azide	0.08 ml

[Bulk quote request](#)

<b>Availability</b>	1-3 business days
<b>Species Reactivity</b>	Human
<b>Format</b>	Antigen affinity purified
<b>Clonality</b>	Polyclonal (rabbit origin)
<b>Isotype</b>	Rabbit Ig
<b>Purity</b>	Antigen affinity
<b>UniProt</b>	P15813
<b>Applications</b>	Western Blot : 1:1000
<b>Limitations</b>	This CD1d antibody is available for research use only.



Western blot analysis of CD1d antibody and 293 cell lysate (2 ug/lane) either nontransfected (Lane 1) or transiently transfected (2) with the CD1D gene.



CD1d antibody western blot analysis in K562 lysate

## Description

This gene encodes a divergent member of the CD1 family of transmembrane glycoproteins, which are structurally related to the major histocompatibility complex (MHC) proteins and form heterodimers with beta-2-microglobulin. The CD1 proteins mediate the presentation of primarily lipid and glycolipid antigens of self or microbial origin to T cells. The human genome contains five CD1 family genes organized in a cluster on chromosome 1. The CD1 family members are thought to differ in their cellular localization and specificity for particular lipid ligands. The protein encoded by this gene localizes to late endosomes and lysosomes via a tyrosine-based motif in the cytoplasmic tail.

## Application Notes

Titration of the CD1d antibody may be required due to differences in protocols and secondary/substrate sensitivity.

## Immunogen

A portion of amino acids 177-206 from the human protein was used as the immunogen for this CD1d antibody.

## Storage

Aliquot the CD1d antibody and store frozen at -20oC or colder. Avoid repeated freeze-thaw cycles.