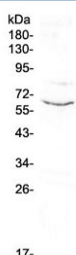


## CD1c Antibody (RQ4079)

Catalog No.	Formulation	Size
RQ4079	0.5mg/ml if reconstituted with 0.2ml sterile DI water	100 ug

**Bulk quote request**

<b>Availability</b>	1-3 business days
<b>Species Reactivity</b>	Human
<b>Format</b>	Antigen affinity purified
<b>Clonality</b>	Polyclonal (rabbit origin)
<b>Isotype</b>	Rabbit IgG
<b>Purity</b>	Antigen affinity purified
<b>Buffer</b>	Lyophilized from 1X PBS with 2% Trehalose and 0.025% sodium azide
<b>UniProt</b>	P29017
<b>Applications</b>	Western Blot : 0.5-1ug/ml
<b>Limitations</b>	This CD1c antibody is available for research use only.



Western blot testing of human placenta lysate with CD1c antibody at 0.5ug/ml. Predicted molecular weight ~38 kDa (unmodified), ~43 kDa (glycosylated); observed here at ~62 kDa.

## Description

CD1C is a group-1 member of the CD1 family of major histocompatibility (MHC)-like glycoproteins. The CD1 proteins mediate the presentation of primarily lipid and glycolipid antigens of self or microbial origin to T cells. The human genome contains five CD1 family genes organized in a cluster on chromosome 1. The CD1 family members are thought to differ in their cellular localization and specificity for particular lipid ligands. The protein encoded by this gene is broadly distributed throughout the endocytic system via a tyrosine-based motif in the cytoplasmic tail. Alternatively spliced transcript variants of this gene have been observed, but their full-length nature is not known.

## Application Notes

Optimal dilution of the CD1c antibody should be determined by the researcher.

## **Immunogen**

A recombinant human partial protein corresponding to amino acids K73-L287 was used as the immunogen for the CD1c antibody.

## **Storage**

After reconstitution, the CD1c antibody can be stored for up to one month at 4°C. For long-term, aliquot and store at -20°C. Avoid repeated freezing and thawing.