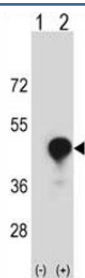


## CD1c Antibody (F42959)

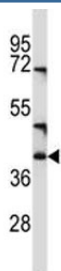
Catalog No.	Formulation	Size
F42959-0.4ML	In 1X PBS, pH 7.4, with 0.09% sodium azide	0.4 ml
F42959-0.08ML	In 1X PBS, pH 7.4, with 0.09% sodium azide	0.08 ml

[Bulk quote request](#)

<b>Availability</b>	1-3 business days
<b>Species Reactivity</b>	Human
<b>Format</b>	Antigen affinity purified
<b>Clonality</b>	Polyclonal (rabbit origin)
<b>Isotype</b>	Rabbit Ig
<b>Purity</b>	Antigen affinity
<b>UniProt</b>	P29017
<b>Applications</b>	Western Blot : 1:1000
<b>Limitations</b>	This CD1c antibody is available for research use only.



Western blot analysis of CD1c antibody and 293 cell lysate (2 ug/lane) either nontransfected (Lane 1) or transiently transfected (2) with the CD1C gene. Predicted molecular weight ~38 kDa (unmodified), ~43 kDa (glycosylated).



CD1c antibody western blot analysis in NCI-H460 lysate. Predicted molecular weight ~38 kDa (unmodified), ~43 kDa (glycosylated).

## Description

This gene encodes a member of the CD1 family of transmembrane glycoproteins, which are structurally related to the major histocompatibility complex (MHC) proteins and form heterodimers with beta-2-microglobulin. The CD1 proteins mediate the presentation of primarily lipid and glycolipid antigens of self or microbial origin to T cells. The human genome contains five CD1 family genes organized in a cluster on chromosome 1. The CD1 family members are thought to differ in their cellular localization and specificity for particular lipid ligands. The protein encoded by this gene is broadly distributed throughout the endocytic system via a tyrosine-based motif in the cytoplasmic tail. Alternatively spliced transcript variants of this gene have been observed, but their full-length nature is not known.

## Application Notes

Titration of the CD1c antibody may be required due to differences in protocols and secondary/substrate sensitivity.

## Immunogen

A portion of amino acids 226-253 from the human protein was used as the immunogen for this CD1c antibody.

## Storage

Aliquot the CD1c antibody and store frozen at -20oC or colder. Avoid repeated freeze-thaw cycles.