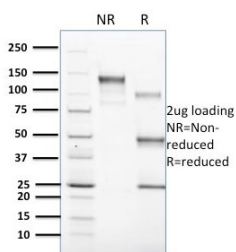


CD1c Antibody [clone CD1C/1603] (V8194)

Catalog No.	Formulation	Size
V8194-100UG	0.2 mg/ml in 1X PBS with 0.1 mg/ml BSA (US sourced) and 0.05% sodium azide	100 ug
V8194-20UG	0.2 mg/ml in 1X PBS with 0.1 mg/ml BSA (US sourced) and 0.05% sodium azide	20 ug
V8194SAF-100UG	1 mg/ml in 1X PBS; BSA free, sodium azide free	100 ug

[Bulk quote request](#)

Availability	1-3 business days
Species Reactivity	Human
Format	Purified
Clonality	Monoclonal (mouse origin)
Isotype	Mouse IgG1, kappa
Clone Name	CD1C/1603
Purity	Protein G affinity chromatography
UniProt	P29017
Applications	ELISA (order BSA-free Format For Coating) :
Limitations	This CD1c antibody is available for research use only.



SDS-PAGE analysis of purified, BSA-free CD1c antibody (clone CD1C/1603) as confirmation of integrity and purity.

Description

The CD1 multigene family encodes five forms of the CD1 T-cell surface glycoprotein in human, designated CD1A, 1B, 1C, 1D and 1E. CD1, a type 1 membrane protein, has structural similarity to the MHC class I antigen and has been shown to present lipid antigens for recognition by T lymphocytes. CD1 antigens are associated with β -2-Microglobulin and expressed

on cortical thymocytes, Langerhans cells, a B cell subset and some dendritic cells. Specifically, CD1A is a marker for Langerhans cell histiocytosis (LCH) and is found on interdigitating cells. Adaptor-protein complexes and CD1-associated chaperones control CD1 trafficking, and the development and activation of CD1-restricted T cells. Constitutive endocytosis of CD1B molecules and the differential sorting of MHC class II from lysosomes separate peptide- and lipid antigen-presenting molecules during dendritic cell maturation. CD1B is also expressed in interdigitating cells. The human CD1 genes are all closely linked in a cluster mapping at chromosome 1q23.1

Application Notes

Optimal dilution of the CD1c antibody should be determined by the researcher.

Immunogen

A recombinant full-length human CD1c protein was used as the immunogen for this CD1c antibody.

Storage

Store the CD1c antibody at 2-8oC (with azide) or aliquot and store at -20oC or colder (without azide).