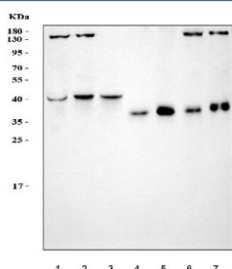


CD1b Antibody (RQ7066)

Catalog No.	Formulation	Size
RQ7066	0.5mg/ml if reconstituted with 0.2ml sterile DI water	100 ug

Bulk quote request

Availability	1-3 business days
Species Reactivity	Human, Mouse, Rat
Format	Antigen affinity purified
Host	Rabbit
Clonality	Polyclonal (rabbit origin)
Isotype	Rabbit IgG
Purity	Antigen affinity purified
Buffer	Lyophilized from 1X PBS with 2% Trehalose
UniProt	P29016
Applications	Western Blot : 0.5-1ug/ml Direct ELISA : 0.1-0.5ug/ml
Limitations	This CD1b antibody is available for research use only.



Western blot testing of 1) human HCCT, 2) human MOLT4, 3) human Jurkat, 4) rat thymus, 5) mouse thymus, 6) mouse RAW264.7 and 7) mouse ANA-1 cell lysate with CD1b antibody. The predicted molecular weight is ~37 kDa but is often observed higher due to glycosylation.

Description

CD1B is a member of the CD1 family of transmembrane glycoproteins, which are structurally related to the major histocompatibility complex (MHC) proteins and form heterodimers with beta-2-microglobulin. The CD1 proteins mediate the presentation of primarily lipid and glycolipid antigens of self or microbial origin to T cells. The human genome contains five CD1 family genes organized in a cluster on chromosome 1. The CD1 family members are thought to differ in their cellular localization and specificity for particular lipid ligands. The protein encoded by this gene localizes to late endosomes and lysosomes via a tyrosine-based motif in the cytoplasmic tail, and requires vesicular acidification to bind

lipid antigens.

Application Notes

Optimal dilution of the CD1b antibody should be determined by the researcher.

Immunogen

Recombinant human protein (amino acids D78-Y110) was used as the immunogen for the CD1b antibody.

Storage

After reconstitution, the CD1b antibody can be stored for up to one month at 4oC. For long-term, aliquot and store at -20oC. Avoid repeated freezing and thawing.