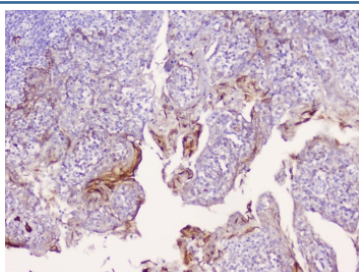


CD1b Antibody (RQ4547)

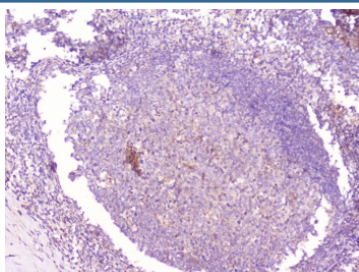
Catalog No.	Formulation	Size
RQ4547	0.5mg/ml if reconstituted with 0.2ml sterile DI water	100 ug

Bulk quote request

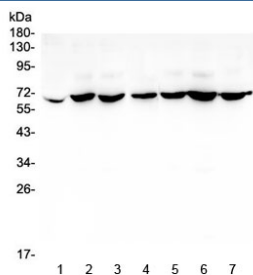
Availability	1-3 business days
Species Reactivity	Human
Format	Antigen affinity purified
Host	Rabbit
Clonality	Polyclonal (rabbit origin)
Isotype	Rabbit IgG
Purity	Antigen affinity purified
Buffer	Lyophilized from 1X PBS with 2% Trehalose and 0.025% sodium azide
UniProt	P29016
Localization	Plasma membrane, cytoplasm
Applications	Western Blot : 0.5-1ug/ml IHC (FFPE) : 1-2ug/ml
Limitations	This CD1b antibody is available for research use only.



IHC staining of FFPE human tonsil tissue with CD1b antibody at 1ug/ml. HIER: boil tissue sections in pH6, 10mM citrate buffer, for 10-20 min followed by cooling at RT for 20 min.



IHC staining of FFPE human tonsil tissue with CD1b antibody at 1ug/ml. HIER: boil tissue sections in pH6, 10mM citrate buffer, for 10-20 min followed by cooling at RT for 20 min.



Western blot testing of human 1) placenta, 2) PC-3, 3) SW620, 4) THP-1, 5) MDA-MB-231, 6) K562 and 7) A431 lysate with CD1b antibody at 0.5ug/ml. The predicted molecular weight is ~37 kDa but is often observed higher due to glycosylation.

Description

CD1b is a member of the CD1 family of transmembrane glycoproteins, which are structurally related to the major histocompatibility complex (MHC) proteins and form heterodimers with beta-2-microglobulin. The CD1 proteins mediate the presentation of primarily lipid and glycolipid antigens of self or microbial origin to T cells. The human genome contains five CD1 family genes organized in a cluster on chromosome 1. The CD1 family members are thought to differ in their cellular localization and specificity for particular lipid ligands. The protein encoded by this gene localizes to late endosomes and lysosomes via a tyrosine-based motif in the cytoplasmic tail, and requires vesicular acidification to bind lipid antigens.

Application Notes

Optimal dilution of the CD1b antibody should be determined by the researcher.

Immunogen

Amino acids DKEVAELEEIFRVYIFGFAREVQDFAGDFQMKY were used as the immunogen for the CD1b antibody.

Storage

After reconstitution, the CD1b antibody can be stored for up to one month at 4oC. For long-term, aliquot and store at -20oC. Avoid repeated freezing and thawing.