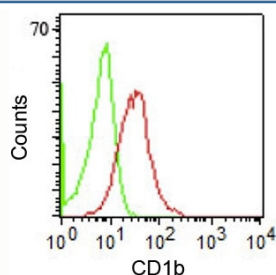


CD1b Antibody [clone RIV12] (V2028)

Catalog No.	Formulation	Size
V2028-100UG	0.2 mg/ml in 1X PBS with 0.1 mg/ml BSA (US sourced) and 0.05% sodium azide	100 ug
V2028-20UG	0.2 mg/ml in 1X PBS with 0.1 mg/ml BSA (US sourced) and 0.05% sodium azide	20 ug
V2028SAF-100UG	1 mg/ml in 1X PBS; BSA free, sodium azide free	100 ug

[Bulk quote request](#)

Species Reactivity	Human
Format	Purified
Host	Mouse
Clonality	Monoclonal (mouse origin)
Isotype	Mouse IgG1, kappa
Clone Name	RIV12
Purity	Protein G affinity chromatography
Buffer	1X PBS, pH 7.4
Gene ID	910
Localization	Cell surface, cytoplasmic
Applications	ELISA (order BSA/sodium Azide-free Format For Coating) : Flow Cytometry : 0.5-1ug/10 ⁶ cells Immunofluorescence : 0.5-1ug/ml
Limitations	This CD1b antibody is available for research use only.



FACS staining of human PBMCs using CD1b antibody (RIV12).

Description

This antibody recognizes CD1b, a 44kDa type I glycoprotein associated with beta2-microglobulin. It is expressed on dendritic cells, Langerhans cells, thymocytes, and T acute lymphoblastic leukemia cells. The CD1 multigene family encodes five forms of the CD1 T-cell surface glycoprotein in human, designated CD1A, 1B, 1C, 1D and 1E. CD1, a type 1 membrane protein, has structural similarity to the MHC class I antigen and has been shown to present lipid antigens for recognition by T lymphocytes. Constitutive endocytosis of CD1b molecules and the differential sorting of MHC class II from lysosomes separate peptide- and lipid antigen-presenting molecules during dendritic cell maturation. It is also expressed in interdigitating cells.

Application Notes

The concentration stated for each application is a general starting point. Variations in protocols, secondaries and substrates may require the CD1b antibody to be titrated up or down for optimal performance.

Immunogen

Human peripheral lymphocytes were used as the immunogen for this CD1b antibody.

Storage

Store the CD1b antibody at 2-8°C (with azide) or aliquot and store at -20°C or colder (without azide).

Alternate Names

hTa1 thymocyte antigen; Ly38; T6/Leu6

References (4)