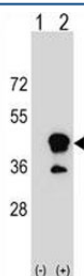


## CD1b Antibody (F46544)

Catalog No.	Formulation	Size
F46544-0.4ML	In 1X PBS, pH 7.4, with 0.09% sodium azide	0.4 ml
F46544-0.08ML	In 1X PBS, pH 7.4, with 0.09% sodium azide	0.08 ml

[Bulk quote request](#)

<b>Availability</b>	1-3 business days
<b>Species Reactivity</b>	Human
<b>Format</b>	Antigen affinity purified
<b>Host</b>	Rabbit
<b>Clonality</b>	Polyclonal (rabbit origin)
<b>Isotype</b>	Rabbit Ig
<b>Purity</b>	Antigen affinity
<b>UniProt</b>	P29016
<b>Applications</b>	Western Blot : 1:1000
<b>Limitations</b>	This CD1b antibody is available for research use only.



Western blot analysis of CD1b antibody and 293 cell lysate (2 ug/lane) either nontransfected (Lane 1) or transiently transfected (2) with the CD1B gene.

## Description

This gene encodes a member of the CD1 family of transmembrane glycoproteins, which are structurally related to the major histocompatibility complex (MHC) proteins and form heterodimers with beta-2-microglobulin. The CD1 proteins mediate the presentation of primarily lipid and glycolipid antigens of self or microbial origin to T cells. The human genome contains five CD1 family genes organized in a cluster on chromosome 1. The CD1 family members are thought to differ in their cellular localization and specificity for particular lipid ligands. The protein encoded by this gene localizes to late endosomes and lysosomes via a tyrosine-based motif in the cytoplasmic tail, and requires vesicular acidification to bind lipid antigens. [provided by RefSeq].

## Application Notes

Titration of the CD1b antibody may be required due to differences in protocols and secondary/substrate sensitivity.

## Immunogen

A portion of amino acids 57-85 from the human protein was used as the immunogen for this CD1b antibody.

## Storage

Aliquot the CD1b antibody and store frozen at -20oC or colder. Avoid repeated freeze-thaw cycles.