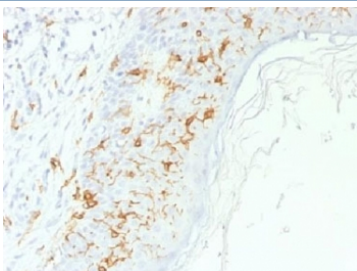


## CD1A Antibody / Immune Regulation Marker Antibody (V3253)

Catalog No.	Formulation	Size
V3253-100UG	0.2 mg/ml in 1X PBS with 0.1 mg/ml BSA (US sourced) and 0.05% sodium azide	100 ug
V3253-20UG	0.2 mg/ml in 1X PBS with 0.1 mg/ml BSA (US sourced) and 0.05% sodium azide	20 ug
V3253SAF-100UG	1 mg/ml in 1X PBS; BSA free, sodium azide free	100 ug

[Bulk quote request](#)

<b>Availability</b>	1-3 business days
<b>Species Reactivity</b>	Human
<b>Format</b>	Purified
<b>Host</b>	Rabbit
<b>Clonality</b>	Polyclonal (rabbit origin)
<b>Isotype</b>	Rabbit IgG
<b>Purity</b>	Protein A affinity chromatography
<b>Buffer</b>	1X PBS, pH 7.4
<b>UniProt</b>	P06126
<b>Gene ID</b>	909
<b>Localization</b>	Cell surface, cytoplasmic
<b>Applications</b>	Immunohistochemistry (FFPE) : 0.5-1ug/ml for 30 min at RT
<b>Limitations</b>	This CD1a antibody is available for research use only.



CD1A Antibody for IHC. Immunohistochemistry analysis of CD1A / CD1a expression in FFPE human skin tissue using CD1A Antibody. Membranous and cytoplasmic staining is observed in dendritic cells within the epidermis and superficial dermis, consistent with Langerhans cell localization, while surrounding keratinocytes remain largely negative. The distribution and density of CD1a-positive cells along the epithelial interface support evaluation of dendritic cells involved in local immune regulation and modulation of T-cell responses within skin. Required HIER: boil tissue sections in 10 mM citrate buffer, pH 6, for 10-20 minutes.

## Description

CD1 molecule alpha 1 (CD1A) is a transmembrane glycoprotein encoded by the CD1A gene that functions in lipid antigen presentation and contributes to regulation of immune responses through dendritic cell activity. CD1A antibody, also known as CD1a antibody or T-cell surface glycoprotein CD1a antibody, enables detection of antigen-presenting cells involved in modulating immune function. CD1A Antibody is particularly useful for studying mechanisms of immune regulation and interaction between dendritic cells and T cells.

Dendritic cells expressing CD1a play a dual role in the immune system, not only activating T cells but also contributing to immune tolerance and regulation. Depending on context, these cells can promote immune activation or help maintain immune homeostasis by regulating T-cell responses. Detection of CD1a therefore provides insight into the balance between immune activation and immune regulation within biological systems.

In tissue and cellular studies, CD1a-positive dendritic cells are found in epithelial and lymphoid environments where they interact with T cells and other immune populations. Their function is influenced by local signals, cytokines, and antigen exposure, which can alter their role in immune modulation. A CD1a antibody enables identification of these cells and supports investigation of their regulatory functions.

Changes in dendritic cell activity and CD1A expression are associated with immune dysregulation, including autoimmune disease, chronic inflammation, and altered immune tolerance. Monitoring CD1a-positive cell populations can therefore provide insight into how immune responses are controlled and how dysregulation contributes to disease.

CD1A Antibody is therefore well suited for studies focused on immune regulation and modulation of immune responses. Its use supports identification of dendritic cells involved in controlling T-cell activity and enables investigation of cellular mechanisms that maintain immune balance.

A full range of CD1A antibody reagents for immunohistochemistry, western blot, and flow cytometry is available on our [CD1A Antibody](#) collection page.

## Application Notes

The concentration stated for each application is a general starting point. Variations in protocols, secondaries and substrates may require the CD1A Antibody / Immune Regulation Marker Antibody to be titered up or down for optimal performance.

## Immunogen

Human CD1a protein was used as the immunogen for this CD1A Antibody / Immune Regulation Marker Antibody.

## Storage

Store the CD1a antibody at 2-8°C (with azide) or aliquot and store at -20°C or colder (without azide).

## Alternate Names

CD1a antibody, immune regulation marker antibody, CD1A immune modulation antibody, dendritic cell regulatory marker antibody, T-cell surface glycoprotein CD1a antibody

