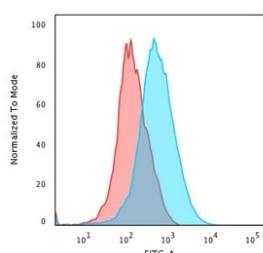


CD1a Antibody [clone SPM120] (V7376)

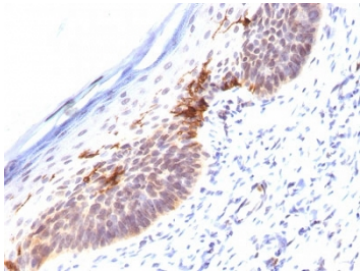
Catalog No.	Formulation	Size
V7376-100UG	0.2 mg/ml in 1X PBS with 0.1 mg/ml BSA (US sourced) and 0.05% sodium azide	100 ug
V7376-20UG	0.2 mg/ml in 1X PBS with 0.1 mg/ml BSA (US sourced) and 0.05% sodium azide	20 ug
V7376SAF-100UG	1 mg/ml in 1X PBS; BSA free, sodium azide free	100 ug
V7376IHC-7ML	Prediluted in 1X PBS with 0.1 mg/ml BSA (US sourced) and 0.05% sodium azide; *For IHC use only*	7 ml

[Bulk quote request](#)

Availability	1-3 business days
Species Reactivity	Human
Format	Purified
Host	Mouse
Clonality	Monoclonal (mouse origin)
Isotype	Mouse IgG1, kappa
Clone Name	SPM120
Purity	Protein G affinity chromatography
UniProt	P06126
Localization	Cell surface, cytoplasmic
Applications	Flow Cytometry : 1-2ug/10 ⁶ cells Immunohistochemistry (FFPE) : 1-2ug/ml for 30 min at RT
Limitations	This CD1a antibody is available for research use only.



Flow cytometry testing of human Jurkat cells with CD1a antibody (clone SPM120); Red=isotype control, Blue= CD1a antibody.



IHC staining of FFPE human skin with CD1a antibody (clone SPM120). HIER: boil tissue sections in pH 9 10mM Tris with 1mM EDTA for 10-20 min followed by cooling at RT for 20 min.

Description

At least five CD1 genes (CD1a, b, c, d, and e) are identified. CD1 proteins have been demonstrated to restrict Tcell response to non-peptide lipid and glycolipid antigens and play a role in non-classical antigen presentation. CD1a is a non-polymorphic MHC Class 1 related cell surface glycoprotein, expressed in association with Beta-2 microglobulin. CD1a antibody labels Langerhans cell histiocytosis (Histiocytosis X), extranodal histiocytic sarcoma, a subset of T-lymphoblastic lymphoma/leukemia, and interdigitating dendritic cell sarcoma of the lymph node. When combined with antibody against TTF-1 and CD5, CD1a antibody is useful in distinguishing between pulmonary and thymic neoplasms since it is consistently expressed in thymic lymphocytes in both typical and atypical thymomas, but only focally in 1/6 of thymic carcinomas and not in lymphocytes in pulmonary neoplasms. CD1a antibody is reported to be a new marker for perivascular epithelial cell tumor (PEComa).

Application Notes

The concentration stated for each application is a general starting point. Variations in protocols, secondaries and substrates may require the CD1a antibody to be titrated up or down for optimal performance.

1. The prediluted format is supplied in a dropper bottle and is optimized for use in IHC. After epitope retrieval step (if required), drip mAb solution onto the tissue section and incubate at RT for 30 min.

Immunogen

Human thymus cells were used as the immunogen for this CD1a antibody.

Storage

Store the CD1a antibody at 2-8oC (with azide) or aliquot and store at -20oC or colder (without azide).

Alternate Names

Epidermal dendritic cell marker, T cell surface antigen T6 / Leu 6