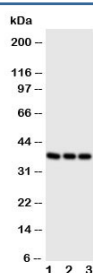


## CD1a Antibody (R30975)

Catalog No.	Formulation	Size
R30975	0.5mg/ml if reconstituted with 0.2ml sterile DI water	100 ug

**Bulk quote request**

<b>Availability</b>	1-3 business days
<b>Species Reactivity</b>	Human
<b>Format</b>	Antigen affinity purified
<b>Host</b>	Rabbit
<b>Clonality</b>	Polyclonal (rabbit origin)
<b>Isotype</b>	Rabbit IgG
<b>Purity</b>	Antigen affinity
<b>Buffer</b>	Lyophilized from 1X PBS with 2.5% BSA and 0.025% sodium azide/thimerosal
<b>UniProt</b>	P06126
<b>Applications</b>	Western Blot : 0.5-1ug/ml
<b>Limitations</b>	This CD1a antibody is available for research use only.



Western blot testing of CD1a antibody and Lane 1: Jurkat; 2: SW620; 3: CEM cell lysate.  
Predicted molecular weight: 37~49 kDa.

## Description

Cluster of Differentiation 1a, also known as CD1, is a human protein encoded by the CD1A gene. CD1a is one of five distinct CD1 genes that are variably conserved in different mammalian species. This gene encodes a member of the CD1 family of transmembrane glycoproteins, which are structurally related to the major histocompatibility complex (MHC) proteins and form heterodimers with beta-2-microglobulin. The CD1A gene is mapped on 1q23.1. The CD1 proteins mediate the presentation of primarily lipid and glycolipid antigens of self or microbial origin to T cells. CD1A is concentrated in the early or recycling endosome. Moody et al.(2004) reported that CD1a presents to T cells a family of previously unknown lipopeptides from Mycobacterium tuberculosis, named didehydroxymycobactins because of their

structural relation to mycobactin siderophores. The protein encoded by this gene localizes to the plasma membrane and to recycling vesicles of the early endocytic system. Apolipoprotein E (107741) binds lipid antigens and delivers them by receptor-mediated uptake into endosomal compartments containing CD1 in antigen-presenting cells.

## Application Notes

The stated application concentrations are suggested starting amounts. Titration of the CD1a antibody may be required due to differences in protocols and secondary/substrate sensitivity.

## Immunogen

An amino acid sequence from the middle region of human CD1a (AKHFCKVLNQNQHEND) was used as the immunogen for this CD1a antibody.

## Storage

After reconstitution, the CD1a antibody can be stored for up to one month at 4°C. For long-term, aliquot and store at -20°C. Avoid repeated freezing and thawing.