

CD1a Antibody [clone CBT6] (V2949)

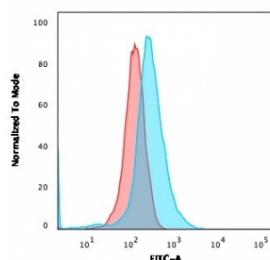
Catalog No.	Formulation	Size
V2949-100UG	0.2 mg/ml in 1X PBS with 0.1 mg/ml BSA (US sourced) and 0.05% sodium azide	100 ug
V2949-20UG	0.2 mg/ml in 1X PBS with 0.1 mg/ml BSA (US sourced) and 0.05% sodium azide	20 ug
V2949SAF-100UG	1 mg/ml in 1X PBS; BSA free, sodium azide free	100 ug



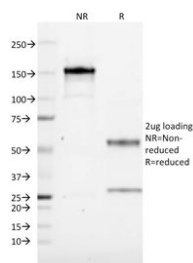
Citations (2)

[Bulk quote request](#)

Availability	1-3 business days
Species Reactivity	Human, Mouse
Format	Purified
Host	Mouse
Clonality	Monoclonal (mouse origin)
Isotype	Mouse IgG2b, kappa
Clone Name	CBT6
Purity	Protein G affinity chromatography
UniProt	P06126
Localization	Cell surface, cytoplasmic
Applications	Flow Cytometry : 1-2ug/million cells Immunofluorescence : 1-2ug/ml
Limitations	This CD1a antibody is available for research use only.



Flow cytometry testing of human Molt-4 cells with CD1a antibody (clone CBT6);
Red=isotype control, Blue= CD1a antibody.



SDS-PAGE analysis of purified, BSA-free CD1a antibody (clone CBT6) as confirmation of integrity and purity.

Description

CD1a is an antigen-presenting protein that binds self and non-self lipid and glycolipid antigens and presents them to T-cell receptors on natural killer T-cells. [UniProt]

Application Notes

Optimal dilution of the CD1a antibody should be determined by the researcher.

Immunogen

Human recombinant protein was used as the immunogen for the CD1a antibody.

Storage

Store the CD1a antibody at 2-8°C (with azide) or aliquot and store at -20°C or colder (without azide).