

## CD1a Antibody [clone 66IIC7] (V2948)

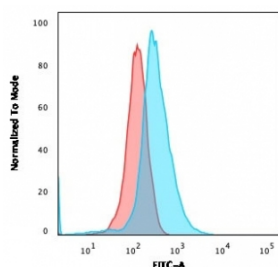
Catalog No.	Formulation	Size
V2948-100UG	0.2 mg/ml in 1X PBS with 0.1 mg/ml BSA (US sourced) and 0.05% sodium azide	100 ug
V2948-20UG	0.2 mg/ml in 1X PBS with 0.1 mg/ml BSA (US sourced) and 0.05% sodium azide	20 ug
V2948SAF-100UG	1 mg/ml in 1X PBS; BSA free, sodium azide free	100 ug



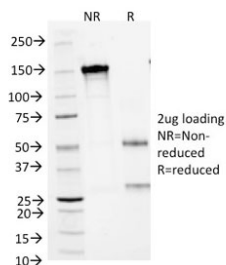
Citations (5)

[Bulk quote request](#)

Availability	1-3 business days
Species Reactivity	Human
Format	Purified
Host	Mouse
Clonality	Monoclonal (mouse origin)
Isotype	Mouse IgG2a, kappa
Clone Name	66IIC7
Purity	Protein G affinity chromatography
UniProt	P06126
Localization	Cell surface, cytoplasmic
Applications	Flow Cytometry : 1-2ug/million cells Immunofluorescence : 1-2ug/ml
Limitations	This CD1a antibody is available for research use only.



Flow cytometry testing of human Molt-4 cells with CD1a antibody (clone 66IIC7);  
Red=isotype control, Blue= CD1a antibody.



SDS-PAGE Analysis of Purified, BSA-Free CD1a Antibody (clone 66IIC7). Confirmation of Integrity and Purity of the Antibody.

## Description

At least five CD1 genes (CD1a, b, c, d, and e) are identified. CD1 proteins have been demonstrated to restrict T cell response to non-peptide lipid and glycolipid antigens and play a role in non-classical antigen presentation. CD1a is a non-polymorphic MHC Class 1 related cell surface glycoprotein, expressed in association with Beta-2 microglobulin. Anti-CD1a labels Langerhans cell histiocytosis (Histiocytosis X), extranodal histiocytic sarcoma, a subset of T-lymphoblastic lymphoma/leukemia, and interdigitating dendritic cell sarcoma of the lymph node. When combined with antibodies against TTF-1 and CD5, anti-CD1a is useful in distinguishing between pulmonary and thymic neoplasms since CD1a is consistently expressed in thymic lymphocytes in both typical and atypical thymomas, but only focally in 1/6 of thymic carcinomas and not in lymphocytes in pulmonary neoplasms. Anti-CD1a is reported to be a new marker for perivascular epithelial cell tumor (PEComa).

## Application Notes

Optimal dilution of the CD1a antibody should be determined by the researcher.

1. Staining of formalin-fixed tissues requires boiling tissue sections in 10mM Citrate buffer, pH 6.0, for 10-20 min followed by cooling at RT for 20 min.

## Immunogen

Human thymocytes were used as the immunogen for the CD1a antibody.

## Storage

Store the CD1a antibody at 2-8°C (with azide) or aliquot and store at -20°C or colder (without azide).