

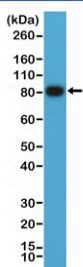
## CD19 Antibody / Cytoplasmic domain [clone RM332] (R20356)

Catalog No.	Formulation	Size
R20356-0.1ML	Antibody in PBS with 50% glycerol, 1% BSA and 0.09% sodium azide	100 ul

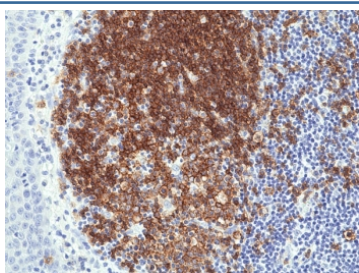
Recombinant **RABBIT MONOCLONAL**

[Bulk quote request](#)

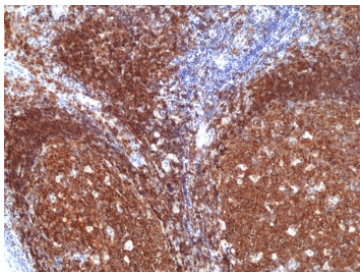
Availability	1-3 business days
Species Reactivity	Human
Format	Purified
Clonality	Recombinant Rabbit Monoclonal
Isotype	Rabbit IgG
Clone Name	RM332
Purity	Protein A purified from animal origin-free supernatant
UniProt	P15391
Localization	Cell surface, cytoplasmic
Applications	Immunohistochemistry (FFPE) : 1:500-1:1000 Western Blot : 1:1000-1:2000
Limitations	This recombinant CD19 antibody is available for research use only.



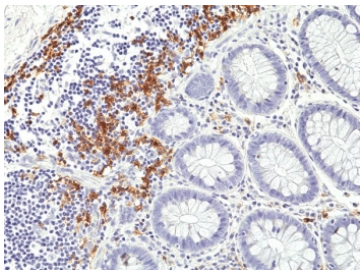
Western blot testing of human Raji cell lysate with CD19 antibody at 1:1000. Expected molecular weight: 60~100 kDa depending on glycosylation level.



IHC staining of FFPE human tonsil tissue with recombinant CD19 antibody at 1:1000.



IHC staining of FFPE human tonsil tissue with recombinant CD19 antibody at 1:1000.



IHC staining of FFPE human colon tissue with recombinant CD19 antibody at 1:1000.

## Description

This antibody reacts to the cytoplasmic domain of human CD19.

## Application Notes

The stated application concentrations are suggested starting points. Titration of the recombinant CD19 antibody may be required due to differences in protocols and secondary/substrate sensitivity.

## Immunogen

A peptide corresponding to the C-terminus of human CD19 was used as the immunogen for the recombinant CD19 antibody.

## Storage

Store the recombinant CD19 antibody at -20°C.