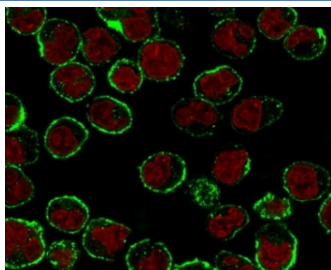


CD19 Antibody [clone CDLA19-1] (V7076)

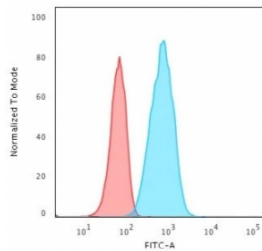
Catalog No.	Formulation	Size
V7076-100UG	0.2 mg/ml in 1X PBS with 0.1 mg/ml BSA (US sourced), 0.05% sodium azide	100 ug
V7076-20UG	0.2 mg/ml in 1X PBS with 0.1 mg/ml BSA (US sourced), 0.05% sodium azide	20 ug
V7076SAF-100UG	1 mg/ml in 1X PBS; BSA free, sodium azide free	100 ug

[Bulk quote request](#)

Availability	1-3 business days
Species Reactivity	Human
Format	Purified
Host	Mouse
Clonality	Monoclonal (mouse origin)
Isotype	Mouse IgG1, kappa
Clone Name	CDLA19-1
Purity	Protein G affinity chromatography
UniProt	P15391
Localization	Cell surface, cytoplasmic
Applications	Flow Cytometry : 1-2ug/million cells Immunofluorescence : 1-2ug/ml
Limitations	This CD19 antibody is available for research use only.



Immunofluorescent staining of human Raji cells with CD19 antibody (clone CDLA19-1, green) and Reddot nuclear stain (red).



Flow cytometry testing of human Raji cells with CD19 antibody (clone CDLA19-1);
Red=isotype control, Blue= CD19 antibody.

Description

CD19 is expressed on follicular dendritic cells and B cells. It is present on B cells from earliest recognizable B-lineage cells during development to B-cell blasts but is lost on maturation to plasma cells. It primarily acts as a B cell co-receptor in conjunction with CD21 and CD81. Upon activation, the cytoplasmic tail of CD19 becomes phosphorylated, which leads to binding by Src-family kinases and recruitment of PI-3 kinase. [Wiki]

Application Notes

Variations in protocols, secondaries and substrates may require the CD19 antibody to be titrated up or down for optimal performance.

Immunogen

Human recombinant full length protein was used as immunogen for this CD19 antibody.

Storage

CD19 antibody with azide can be stored at 2-8°C. The azide-free format should be aliquoted and stored at -20°C or colder.