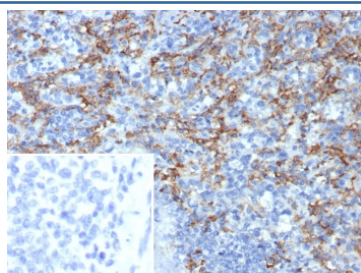


## CD163L1 Antibody [clone CD163L1/7974] (V4247)

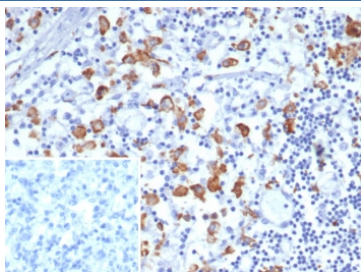
Catalog No.	Formulation	Size
V4247-100UG	0.2 mg/ml in 1X PBS with 0.1 mg/ml BSA (US sourced), 0.05% sodium azide	100 ug
V4247-20UG	0.2 mg/ml in 1X PBS with 0.1 mg/ml BSA (US sourced), 0.05% sodium azide	20 ug
V4247SAF-100UG	1 mg/ml in 1X PBS; BSA free, sodium azide free	100 ug

[Bulk quote request](#)

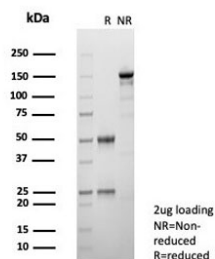
<b>Availability</b>	1-3 business days
<b>Species Reactivity</b>	Human
<b>Format</b>	Purified
<b>Host</b>	Mouse
<b>Clonality</b>	Monoclonal (mouse origin)
<b>Isotype</b>	Mouse IgG
<b>Clone Name</b>	CD163L1/7974
<b>Purity</b>	Protein A/G affinity
<b>UniProt</b>	Q9NR16
<b>Localization</b>	Cytoplasm,
<b>Applications</b>	Immunohistochemistry (FFPE) : 1-2ug/ml for 30 minutes at RT
<b>Limitations</b>	This CD163L1 antibody is available for research use only.



IHC staining of FFPE human spleen tissue with CD163L1 antibody (clone CD163L1/7974). Inset: PBS used in place of primary Ab (secondary Ab negative control). HIER: boil tissue sections in pH 9 10mM Tris with 1mM EDTA for 20 min and allow to cool before testing.



IHC staining of FFPE human lymph node tissue with CD163L1 antibody (clone CD163L1/7974). Inset: PBS used in place of primary Ab (secondary Ab negative control). HIER: boil tissue sections in pH 9 10mM Tris with 1mM EDTA for 20 min and allow to cool before testing.



SDS-PAGE analysis of purified, BSA-free CD163L1 antibody (clone CD163L1/7974) as confirmation of integrity and purity.

## Description

CD163L1 (CD163 molecule-like 1), also known as scavenger receptor cysteine-rich type 1 protein M160 or CD163B, is a 1,453 amino acid protein that belongs to the scavenger receptor cysteine-rich (SRCR) superfamily. Members of the SRCR family contain SRCR domains which are used to influence ligand binding and protein-protein interaction, and are found in cells of the immune system where they exist as membrane-anchored or secreted proteins. Containing 12 SRCR domains, CD163L1 undergoes alternative splicing events to produce 3 isoforms. CD163L1 isoforms 1 and 2 are single-pass type I membrane proteins, unlike isoform 3, which is a secreted protein. CD163L1 isoform 1 is abundantly expressed in lymph node, spleen, thymus and fetal liver, and isoform 2 is found exclusively in spleen. The gene encoding CD163L1 maps to human chromosome 12p13.31.

## Application Notes

Optimal dilution of the CD163L1 antibody should be determined by the researcher.

## Immunogen

A recombinant fragment of human CD163L1 protein was used as the immunogen for the CD163L1 antibody.

## Storage

Aliquot the CD163L1 antibody and store frozen at -20°C or colder. Avoid repeated freeze-thaw cycles.