

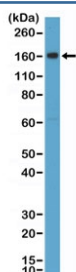
CD163 Antibody [clone RM371] (R20390)

Catalog No.	Formulation	Size
R20390-0.1ML	Antibody in PBS with 50% glycerol, 1% BSA and 0.09% sodium azide	100 ul

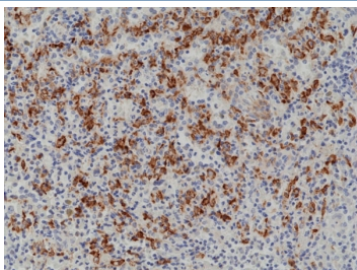
Recombinant **RABBIT MONOCLONAL**

[Bulk quote request](#)

Availability	1-3 business days
Species Reactivity	Human
Format	Purified
Host	Rabbit
Clonality	Recombinant Rabbit Monoclonal
Isotype	Rabbit IgG
Clone Name	RM371
Purity	Protein A purified from animal origin-free supernatant
UniProt	Q86VB7
Localization	Cell surface, cytoplasmic
Applications	Immunohistochemistry (FFPE) : 1:500-1:1000 Western Blot : 1:1000-1:2000
Limitations	This recombinant CD163 antibody is available for research use only.



Western blot testing of human placental tissue lysate with recombinant CD163 antibody at 1:2000 dilution. Predicted molecular weight ~130 kDa but may be observed at higher molecular weights due to glycosylation.



IHC staining of FFPE human spleen tissue with recombinant CD163 antibody at 1:1000.

Description

This antibody reacts to human CD163.

Application Notes

The stated application concentrations are suggested starting points. Titration of the recombinant CD163 antibody may be required due to differences in protocols and secondary/substrate sensitivity.

Immunogen

A peptide corresponding to the N-terminus of human CD163 was used as the immunogen for the recombinant CD163 antibody.

Storage

Store the recombinant CD163 antibody at -20oC.