

CD163 Antibody (F50316)

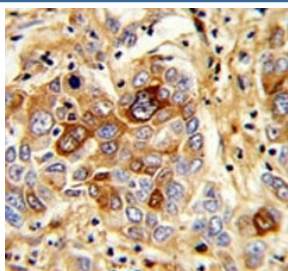
Catalog No.	Formulation	Size
F50316-0.4ML	In 1X PBS, pH 7.4, with 0.09% sodium azide	0.4 ml
F50316-0.08ML	In 1X PBS, pH 7.4, with 0.09% sodium azide	0.08 ml

[Bulk quote request](#)

Availability	1-3 business days
Species Reactivity	Human
Format	Purified
Host	Rabbit
Clonality	Polyclonal (rabbit origin)
Isotype	Rabbit Ig
Purity	Purified
UniProt	Q86VB7
Applications	Western Blot : 1:1000 IHC (Paraffin) : 1:10-1:50
Limitations	This CD163 antibody is available for research use only.

170
130
95
72
55

Western blot analysis of CD163 antibody and K562 lysate



IHC analysis of FFPE human hepatocarcinoma with CD163 antibody

Description

CD163 is an acute phase-regulated receptor involved in clearance and endocytosis of hemoglobin/haptoglobin complexes by macrophages and may thereby protect tissues from free hemoglobin-mediated oxidative damage. The protein may play a role in the uptake and recycling of iron, via endocytosis of hemoglobin/haptoglobin and subsequent breakdown of heme. It binds hemoglobin/haptoglobin complexes in a calcium-dependent and pH-dependent manner. And it exhibits a higher affinity for complexes of hemoglobin and multimeric haptoglobin of HP*1F phenotype than for complexes of hemoglobin and dimeric haptoglobin of HP*1S phenotype. It also induces a cascade of intracellular signals that involves tyrosine kinase-dependent calcium mobilization, inositol triphosphate production and secretion of IL6 and CSF1.

Application Notes

Titration of the CD163 antibody may be required due to differences in protocols and secondary/substrate sensitivity.

Immunogen

A portion of amino acids 245-274 from the human protein was used as the immunogen for this CD163 antibody.

Storage

Aliquot the CD163 antibody and store frozen at -20oC or colder. Avoid repeated freeze-thaw cycles.