

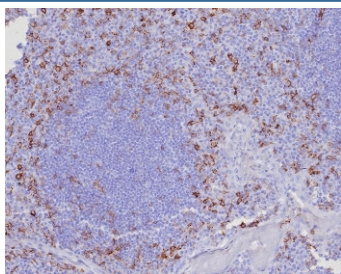
## CD162 Antibody / PSGL-1 [clone PSGL1/8135R] (V4316)

Catalog No.	Formulation	Size
V4316-100UG	0.2 mg/ml in 1X PBS with 0.1 mg/ml BSA (US sourced), 0.05% sodium azide	100 ug
V4316-20UG	0.2 mg/ml in 1X PBS with 0.1 mg/ml BSA (US sourced), 0.05% sodium azide	20 ug
V4316SAF-100UG	1 mg/ml in 1X PBS; BSA free, sodium azide free	100 ug

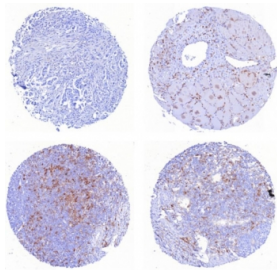
Recombinant **RABBIT MONOCLONAL**

[Bulk quote request](#)

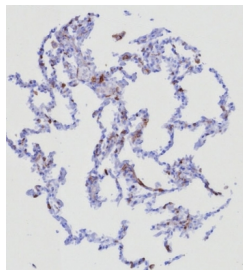
<b>Availability</b>	1-3 business days
<b>Species Reactivity</b>	Human
<b>Format</b>	Purified
<b>Host</b>	Rabbit
<b>Clonality</b>	Recombinant Rabbit Monoclonal
<b>Isotype</b>	Rabbit IgG, kappa
<b>Clone Name</b>	PSGL1/8135R
<b>Purity</b>	Protein A/G affinity
<b>UniProt</b>	Q14242
<b>Localization</b>	Cell surface
<b>Applications</b>	Immunohistochemistry (FFPE) : 1-2ug/ml for 30 minutes at RT
<b>Limitations</b>	This CD162 antibody is available for research use only.



IHC staining of FFPE human tonsil tissue with CD162 antibody (clone PSGL1/8135R).  
HIER: boil tissue sections in pH 9 10mM Tris with 1mM EDTA for 20 min and allow to cool before testing.



IHC staining of FFPE human (1) mammary carcinoma (2) transverse muscle (3) tonsil and (4) tonsil tissue with CD162 antibody (clone PSGL1/8135R) . HIER: boil tissue sections in pH 9 10mM Tris with 1mM EDTA for 20 min and allow to cool before testing.



IHC staining of FFPE human lung tissue with CD162 antibody (clone PSGL1/8135R). HIER: boil tissue sections in pH 9 10mM Tris with 1mM EDTA for 20 min and allow to cool before testing.

## Description

CD162 glycoprotein functions as a high affinity counter-receptor for the cell adhesion molecules P-, E- and L- selectin expressed on myeloid cells and stimulated T lymphocytes. As such, this protein plays a critical role in leukocyte trafficking during inflammation by tethering of leukocytes to activated platelets or endothelia expressing selectins. This protein requires two post-translational modifications, tyrosine sulfation and the addition of the sialyl Lewis x tetrasaccharide (sLex) to its O-linked glycans, for its high-affinity binding activity. Aberrant expression of this gene and polymorphisms in this gene are associated with defects in the innate and adaptive immune response.

## Application Notes

Optimal dilution of the CD162 antibody should be determined by the researcher.

## Immunogen

Recombinant full-length human protein was used as the immunogen for the CD162 antibody.

## Storage

Aliquot the CD162 antibody and store frozen at -20oC or colder. Avoid repeated freeze-thaw cycles.