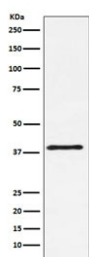


CD152 Antibody / CTLA4 [clone ADCD-3] (RQ5483)

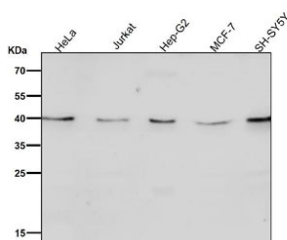
Catalog No.	Formulation	Size
RQ5483	Antibody in PBS with 0.02% sodium azide, 50% glycerol and 0.4-0.5mg/ml BSA	100 ul

[Bulk quote request](#)

Availability	1-2 weeks
Species Reactivity	Human, Mouse, Rat
Format	Purified
Clonality	Rabbit Monoclonal
Isotype	Rabbit IgG
Clone Name	ADCD-3
Purity	Affinity purified
UniProt	P16410
Applications	Western Blot : 1:500-1:2000
Limitations	This CD152 antibody is available for research use only.



Western blot testing of mouse NIH3T3 cell lysate with CD152 antibody. Predicted molecular weight ~25 kDa but may be observed at higher molecular weights due to glycosylation.



Western blot testing of human cell lysates with CD152 antibody. Predicted molecular weight ~25 kDa but may be observed at higher molecular weights due to glycosylation.

Description

The CTLA4 gene is a member of the immunoglobulin superfamily and encodes a protein which transmits an inhibitory signal to T cells. The protein contains a V domain, a transmembrane domain, and a cytoplasmic tail. Alternate transcriptional splice variants, encoding different isoforms, have been characterized. The membrane-bound isoform functions as a homodimer interconnected by a disulfide bond, while the soluble isoform functions as a monomer. Mutations in this gene have been associated with insulin-dependent diabetes mellitus, Graves disease, Hashimoto thyroiditis, celiac disease, systemic lupus erythematosus, thyroid-associated orbitopathy, and other autoimmune diseases. [RefSeq]

Application Notes

Optimal dilution of the CD152 antibody should be determined by the researcher.

Immunogen

A synthetic peptide specific to human CD152 / CTLA4 was used as the immunogen for the CD152 antibody.

Storage

Store the CD152 antibody at -20oC.