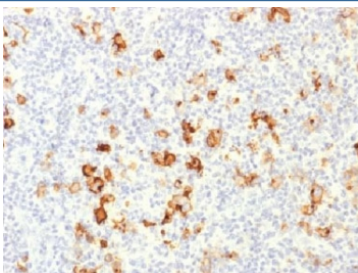


CD15 Antibody (V3203)

Catalog No.	Formulation	Size
V3203-100UG	0.2 mg/ml in 1X PBS with 0.1 mg/ml BSA (US sourced) and 0.05% sodium azide	100 ug
V3203-20UG	0.2 mg/ml in 1X PBS with 0.1 mg/ml BSA (US sourced) and 0.05% sodium azide	20 ug
V3203SAF-100UG	1 mg/ml in 1X PBS; BSA free, sodium azide free	100 ug

Bulk quote request

Availability	1-3 business days
Species Reactivity	Human, Mouse, Rat
Format	Purified
Host	Rabbit
Clonality	Polyclonal (rabbit origin)
Isotype	Rabbit IgG
Purity	Protein A affinity
UniProt	P22083
Localization	Cytoplasmic and cell surface
Applications	Flow Cytometry : 2-4ug/10 ⁶ cells Immunofluorescence : 2-4ug/ml Immunohistochemistry (FFPE) : 5-10ug/ml for 30 min at RT
Limitations	This CD15 antibody is available for research use only.



IHC testing of FFPE human Hodgkin's lymphoma with CD15 antibody. Required HIER: boil tissue sections in 10mM Tris with 1mM EDTA, pH 9, for 10-20 min.

Description

CD15 plays a role in mediating phagocytosis, bactericidal activity, and chemotaxis. It is present on >95% of granulocytes including neutrophils and eosinophils and to a lesser degree on monocytes. In addition, CD15 is expressed in Reed-Sternberg cells and some epithelial cells. CD15 antibody is very useful in the identification of Hodgkin's disease. CD15 is occasionally expressed in large cell lymphomas of both B and T phenotypes which otherwise have a quite distinct histological appearance.

For extensively published CD15 detection in Hodgkin lymphoma and leukocyte differentiation studies, see our [CD15 Antibody / Leukocyte Differentiation Antigen Antibody](#) page featuring clone Leu-M1/MMA with IHC, IF, and FACS validation data.

Application Notes

Optimal dilution of the CD15 antibody should be determined by the researcher.

Immunogen

Purified human neutrophils were used as the immunogen for the CD15 antibody.

Storage

Store the CD15 antibody at 2-8°C (with azide) or aliquot and store at -20°C or colder (without azide).