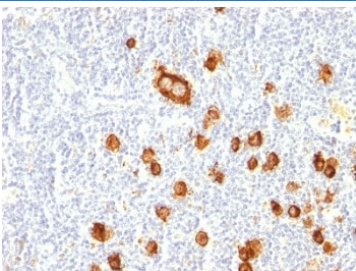


## CD15 Antibody [clone FUT4/815] (V2525)

| Catalog No.    | Formulation   | Size   |
|----------------|---|--------|
| V2525-100UG    | 0.2 mg/ml in 1X PBS with 0.1 mg/ml BSA (US sourced) and 0.05% sodium azide                      | 100 ug |
| V2525-20UG     | 0.2 mg/ml in 1X PBS with 0.1 mg/ml BSA (US sourced) and 0.05% sodium azide                      | 20 ug  |
| V2525SAF-100UG | 1 mg/ml in 1X PBS; BSA free, sodium azide free  | 100 ug |
| V2525IHC-7ML   | Prediluted in 1X PBS with 0.1 mg/ml BSA (US sourced) and 0.05% sodium azide; *For IHC use only* | 7 ml   |

### Bulk quote request

|                           |   |
|---------------------------|---|
| <b>Availability</b>       | 1-3 business days   |
| <b>Species Reactivity</b> | Human, Mouse, Rat   |
| <b>Format</b>             | Purified  |
| <b>Host</b>               | Mouse   |
| <b>Clonality</b>          | Monoclonal (mouse origin)                                 |
| <b>Isotype</b>            | Mouse IgM, kappa  |
| <b>Clone Name</b>         | FUT4/815  |
| <b>Purity</b>             | PEG precipitation   |
| <b>UniProt</b>            | P22083  |
| <b>Localization</b>       | Cytoplasmic and cell surface                              |
| <b>Applications</b>       | Immunohistochemistry (FFPE) : 0.5-1ug/ml for 30 min at RT |
| <b>Limitations</b>        | This CD15 antibody is available for research use only.    |



IHC: Formalin-fixed, paraffin-embedded human Hodgkin's lymphoma stained with CD15 antibody (clone FUT4/815).

## Description

CD15 plays a role in mediating phagocytosis, bactericidal activity, and chemotaxis. It is present on >95% of granulocytes including neutrophils and eosinophils and to a lesser degree on monocytes. In addition, CD15 is expressed in Reed-Sternberg cells and some epithelial cells. CD15 antibody is very useful in the identification of Hodgkin's disease. CD15 is occasionally expressed in large cell lymphomas of both B and T phenotypes which otherwise have a quite distinct histological appearance.

For extensively published CD15 detection in Hodgkin lymphoma and leukocyte differentiation studies, see our [CD15 Antibody / Leukocyte Differentiation Antigen Antibody](#) page featuring clone Leu-M1/MMA with IHC, IF, and FACS validation data.

## Application Notes

Optimal dilution of the CD15 antibody should be determined by the researcher.

1. Staining of formalin-fixed tissues requires boiling tissue sections in 10mM Tris with 1mM EDTA, pH 9.0, for 10-20 min followed by cooling at RT for 20 minutes
2. The prediluted format is supplied in a dropper bottle and is optimized for use in IHC. After epitope retrieval step (if required), drip mAb solution onto the tissue section and incubate at RT for 30 min.

## Immunogen

Purified human neutrophils were used as the immunogen for the CD15 antibody.

## Storage

Store the CD15 antibody cocktail at 2-8°C (with azide) or aliquot and store at -20°C or colder (without azide).