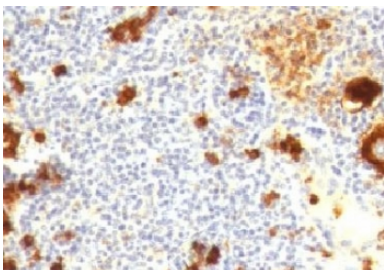


## CD15 Antibody [clone CDLA15-1] (V7093)

Catalog No.	Formulation	Size
V7093-100UG	0.2 mg/ml in 1X PBS with 0.1 mg/ml BSA (US sourced) and 0.05% sodium azide	100 ug
V7093-20UG	0.2 mg/ml in 1X PBS with 0.1 mg/ml BSA (US sourced) and 0.05% sodium azide	20 ug
V7093SAF-100UG	1 mg/ml in 1X PBS; BSA free, sodium azide free	100 ug
V7093IHC-7ML	Prediluted in 1X PBS with 0.1 mg/ml BSA (US sourced) and 0.05% sodium azide; *For IHC use only*	7 ml

### Bulk quote request

<b>Availability</b>	1-3 business days
<b>Species Reactivity</b>	Human
<b>Format</b>	Purified
<b>Host</b>	Mouse
<b>Clonality</b>	Monoclonal (mouse origin)
<b>Isotype</b>	Mouse IgM, kappa
<b>Clone Name</b>	CDLA15-1
<b>Purity</b>	PEG precipitation
<b>UniProt</b>	P22083
<b>Localization</b>	Cytoplasmic and cell surface
<b>Applications</b>	Immunohistochemistry (FFPE) : 1-2ug/ml for 30 min at RT (1) Prediluted IHC Only Format : incubate for 30 min at RT (2)
<b>Limitations</b>	This CD15 antibody is available for research use only.



IHC testing of FFPE human Hodgkin's lymphoma and CD15 antibody (clone CDLA15-1).

## Description

CD15 plays a role in mediating phagocytosis, bactericidal activity, and chemotaxis. It is present on >95% of granulocytes including neutrophils and eosinophils and to a lesser degree on monocytes. In addition, CD15 is expressed in Reed-Sternberg cells and some epithelial cells. CD15 antibody is very useful in the identification of Hodgkin's disease. CD15 is occasionally expressed in large cell lymphomas of both B and T phenotypes which otherwise have a quite distinct histological appearance.

## Application Notes

Optimal dilution of the CD15 antibody should be determined by the researcher.

1. Staining of formalin-fixed tissues requires boiling tissue sections in 10mM Tris with 1mM EDTA, pH 9.0, for 10-20 min followed by cooling at RT for 20 minutes
2. The prediluted format is supplied in a dropper bottle and is optimized for use in IHC. After epitope retrieval step (if required), drip mAb solution onto the tissue section and incubate at RT for 30 min.

## Immunogen

Purified human neutrophils were used as the immunogen for the CD15 antibody.

## Storage

Store the CD15 antibody cocktail at 2-8°C (with azide) or aliquot and store at -20°C or colder (without azide).