

CD15 Antibody [clone BRA-4F1] (V2521)

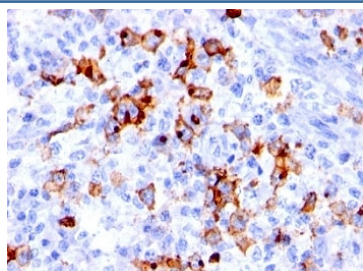
Catalog No.	Formulation	Size
V2521-100UG	0.2 mg/ml in 1X PBS with 0.1 mg/ml BSA (US sourced) and 0.05% sodium azide	100 ug
V2521-20UG	0.2 mg/ml in 1X PBS with 0.1 mg/ml BSA (US sourced) and 0.05% sodium azide	20 ug
V2521SAF-100UG	1 mg/ml in 1X PBS; BSA free, sodium azide free	100 ug



Citations (3)

[Bulk quote request](#)

Availability	1-3 business days
Species Reactivity	Human
Format	Purified
Host	Mouse
Clonality	Monoclonal (mouse origin)
Isotype	Mouse IgM, kappa
Clone Name	BRA-4F1
Purity	PEG precipitation
UniProt	P22083
Localization	Cell surface and granular paranuclear
Applications	Flow Cytometry : 0.5-1ug/million cells Immunofluorescence : 0.5-1ug/ml Immunohistochemistry (FFPE) : 0.5-1ug/ml for 30 min at RT
Limitations	This CD15 antibody is available for research use only.



IHC: Formalin-fixed, paraffin-embedded human Hodgkin's lymphoma stained with CD15 antibody (BRA-4F1).

Description

CD15 plays a role in mediating phagocytosis, bactericidal activity, and chemotaxis. It is present on >95% of granulocytes including neutrophils and eosinophils and to a lesser degree on monocytes. In addition, CD15 is expressed in Reed-Sternberg cells and some epithelial cells. CD15 antibody is very useful in the identification of Hodgkin's disease. CD15 is occasionally expressed in large cell lymphomas of both B and T phenotypes which otherwise have a quite distinct histological appearance.

Application Notes

Optimal dilution of the CD15 antibody should be determined by the researcher.

1. Staining of formalin-fixed tissues requires boiling tissue sections in 10mM Tris with 1mM EDTA, pH 9.0, for 10-20 min followed by cooling at RT for 20 minutes

Immunogen

Myelomonocytic leukemia cells were used as the immunogen for the CD15 antibody.

Storage

Store the CD15 antibody at 2-8°C (with azide) or aliquot and store at -20°C or colder (without azide).