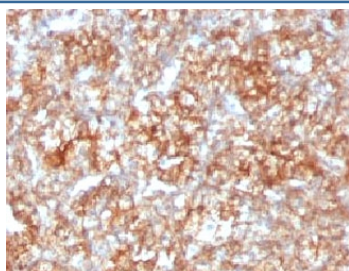


CD147 Antibody [clone CDLA147] (V7160)

Catalog No.	Formulation	Size
V7160-100UG	0.2 mg/ml in 1X PBS with 0.1 mg/ml BSA (US sourced) and 0.05% sodium azide	100 ug
V7160-20UG	0.2 mg/ml in 1X PBS with 0.1 mg/ml BSA (US sourced) and 0.05% sodium azide	20 ug
V7160SAF-100UG	1 mg/ml in 1X PBS; BSA free, sodium azide free	100 ug
V7160IHC-7ML	Prediluted in 1X PBS with 0.1 mg/ml BSA (US sourced) and 0.05% sodium azide; *For IHC use only*	7 ml

Bulk quote request

Availability	1-3 business days
Species Reactivity	Human
Format	Purified
Clonality	Monoclonal (mouse origin)
Isotype	Mouse IgG1, kappa
Clone Name	CDLA147
Purity	Protein G affinity chromatography
UniProt	P35613
Localization	Cell surface
Applications	Immunohistochemistry (FFPE) : 1-2ug/ml for 30 min at RT (1) Prediluted IHC Only Format : incubate for 30 min at RT (2)
Limitations	This CD147 antibody is available for research use only.



IHC testing of FFPE human renal cell carcinoma with CD147 antibody (clone CDLA147).

Description

Basigin (BSG) also known as extracellular matrix metalloproteinase inducer (EMMPRIN) or cluster of differentiation 147 (CD147) is a protein that in humans is encoded by the BSG gene. This protein is a determinant for the Ok blood group system. Basigin has been shown to be an essential receptor on red blood cells for the human malaria parasite, *Plasmodium falciparum*. It has a variety of functions. In addition to its metalloproteinase-inducing ability, basigin also regulates several distinct functions, such as spermatogenesis, expression of the monocarboxylate transporter and the responsiveness of lymphocytes. CD147 is a type I integral membrane receptor that has many ligands, including the cyclophilin (CyP) proteins Cyp-A and Cyp-B and certain integrins. It is expressed by many cell types, including epithelial cells, endothelial cells and leukocytes. [Wiki]

Application Notes

Titering of the CD147 antibody may be required for optimal performance.

1. FFPE testing requires sections to be boiled in pH6 10mM citrate buffer for 10-20 minutes, followed by cooling at RT for 20 minutes, prior to staining.
2. The prediluted format is supplied in a dropper bottle and is optimized for use in IHC. After epitope retrieval step (if required), drip mAb solution onto the tissue section and incubate at RT for 30 min.

Immunogen

Recombinant human protein was used as the immunogen for the CD147 antibody. The epitope is known to be extracellular.

Storage

Store the CD147 antibody at 2-8oC (with azide) or aliquot and store at -20oC or colder (without azide).