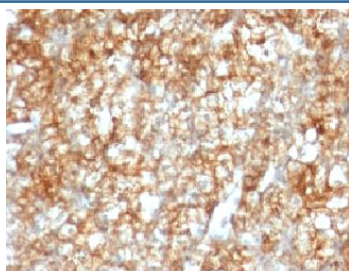


CD147 Antibody [clone BSG/963] (V2876)

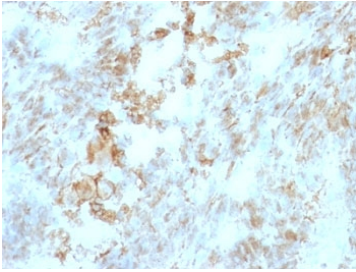
Catalog No.	Formulation	Size
V2876-100UG	0.2 mg/ml in 1X PBS with 0.1 mg/ml BSA (US sourced) and 0.05% sodium azide	100 ug
V2876-20UG	0.2 mg/ml in 1X PBS with 0.1 mg/ml BSA (US sourced) and 0.05% sodium azide	20 ug
V2876SAF-100UG	1 mg/ml in 1X PBS; BSA free, sodium azide free	100 ug
V2876IHC-7ML	Prediluted in 1X PBS with 0.1 mg/ml BSA (US sourced) and 0.05% sodium azide; *For IHC use only*	7 ml

[Bulk quote request](#)

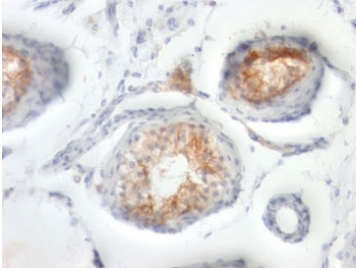
Availability	1-3 business days
Species Reactivity	Human
Format	Purified
Host	Mouse
Clonality	Monoclonal (mouse origin)
Isotype	Mouse IgG1, kappa
Clone Name	BSG/963
Purity	Protein G affinity chromatography
UniProt	P35613
Localization	Cell surface
Applications	Immunohistochemistry (FFPE) : 1-2ug/ml for 30 min at RT
Limitations	This CD147 antibody is available for research use only.



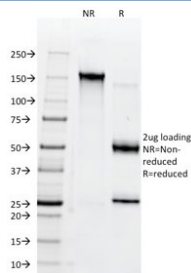
IHC: Formalin-fixed, paraffin-embedded human renal cell carcinoma stained with CD147 antibody (BSG/963).



IHC: Formalin-fixed, paraffin-embedded human colon carcinoma stained with CD147 antibody (BSG/963).



IHC: Formalin-fixed, paraffin-embedded human testicular carcinoma stained with CD147 antibody (BSG/963).



SDS-PAGE analysis of purified, BSA-free CD147 antibody (clone BSG/963) as confirmation of integrity and purity.

Description

This mAb recognizes extracellular epitope of human CD147. It is expressed more intensely on thymocytes than on mature peripheral blood T cells. CD147 is important in spermatogenesis, embryo implantation, neural network formation, and tumor progression. It stimulates the production of interstitial collagenase, gelatinase A, stromelysin-1 and various metalloproteinases (MMPs) by fibroblasts. These enzymes are important factors in cancer invasion and metastasis.

Application Notes

Optimal dilution of the CD147 antibody should be determined by the researcher.

1. Staining of formalin-fixed tissues requires boiling tissue sections in 10mM Citrate buffer, pH 6.0, for 10-20 min followed by cooling at RT for 20 min.
2. The prediluted format is supplied in a dropper bottle and is optimized for use in IHC. After epitope retrieval step (if required), drip mAb solution onto the tissue section and incubate at RT for 30 min.

Immunogen

Recombinant human protein was used as the immunogen for the CD147 antibody.

Storage

Store the CD147 antibody at 2-8°C (with azide) or aliquot and store at -20°C or colder (without azide).

