

CD147 Antibody [clone 8D6] (V2015)

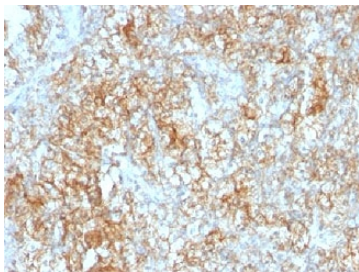
| Catalog No. | Formulation | Size |
|----------------|---|--------|
| V2015-100UG | 0.2 mg/ml in 1X PBS with 0.1 mg/ml BSA (US sourced) and 0.05% sodium azide | 100 ug |
| V2015-20UG | 0.2 mg/ml in 1X PBS with 0.1 mg/ml BSA (US sourced) and 0.05% sodium azide | 20 ug |
| V2015SAF-100UG | 1 mg/ml in 1X PBS; BSA free, sodium azide free | 100 ug |
| V2015IHC-7ML | Prediluted in 1X PBS with 0.1 mg/ml BSA (US sourced) and 0.05% sodium azide; *For IHC use only* | 7 ml |



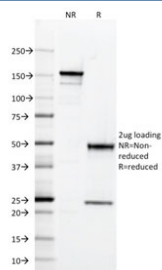
Citations (7)

[Bulk quote request](#)

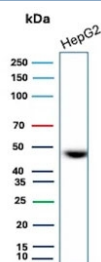
| | |
|---------------------------|---|
| Species Reactivity | Human |
| Format | Purified |
| Host | Mouse |
| Clonality | Monoclonal (mouse origin) |
| Isotype | Mouse IgG1, kappa |
| Clone Name | 8D6 |
| Purity | Protein G purified CD147 antibody |
| Buffer | 1X PBS, pH 7.4 |
| Gene ID | 682 |
| Localization | Cell surface, cytoplasmic |
| Applications | Western Blot : 2-4ug/ml Flow Cytometry : 1-2ug/million cells Immunofluorescence : 1-3ug/ml Immunohistochemistry (FFPE) : 1-2ug/ml for 30 min at RT |
| Limitations | This CD147 antibody is available for research use only. |



IHC testing of FFPE human renal cell carcinoma with CD147 antibody (clone 8D6).



SDS-PAGE analysis of purified, BSA-free CD147 antibody (clone 8D6) as confirmation of integrity and purity.



Western blot testing of human HepG2 cell lysate with CD147 antibody. Predicted molecular weight: ~27 kDa (unmodified), 43-66 kDa (glycosylated).

Description

This antibody recognizes extracellular epitope 2 within the N-terminal Ig domain of human CD147. It expressed more intensely on thymocytes than on mature peripheral blood T cells. CD147 is important in spermatogenesis, embryo implantation, neural network formation, and tumor progression. CD147 stimulates the production of interstitial collagenase, gelatinase A, stromelysin-1 and various metalloproteinases (MMPs) by fibroblasts. These enzymes are important factors in cancer invasion and metastasis.

Application Notes

The concentration stated for each application is a general starting point. Variations in protocols, secondaries and substrates may require the CD147 antibody to be titrated up or down for optimal performance.

1. Staining of formalin-fixed tissues requires boiling tissue sections in 10mM citrate buffer, pH 6.0, for 10-20 min followed by cooling at RT for 20 minutes.
2. The prediluted format is supplied in a dropper bottle and is optimized for use in IHC. After epitope retrieval step (if required), drip mAb solution onto the tissue section and incubate at RT for 30 min.

Immunogen

Human T cell line Molt-13 was used as the immunogen for this CD147 antibody.

Storage

Store the CD147 antibody at 2-8°C (with azide) or aliquot and store at -20°C or colder (without azide).

Alternate Names

5A11 Antigen; 5F7; Basigin; Blood brain barrier HT7 antigen BSG; Extracellular Matrix Metalloproteinase Inducer (EMMPRIN); Leukocyte Activation Antigen M6; Neurothelin; OK Blood Group Antigen; TCSF; Tumor Cell-derived Collagenase Stimulatory Factor, CD147 antibody

References (1)