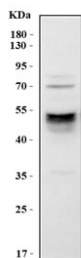


## Cd14 Antibody (RQ8492)

Catalog No.	Formulation	Size
RQ8492	0.5mg/ml if reconstituted with 0.2ml sterile DI water	100 ug

[Bulk quote request](#)

<b>Availability</b>	1-3 days
<b>Species Reactivity</b>	Mouse
<b>Format</b>	Antigen affinity purified
<b>Host</b>	Rabbit
<b>Clonality</b>	Polyclonal (rabbit origin)
<b>Isotype</b>	Rabbit IgG
<b>Purity</b>	Antigen affinity purified
<b>Buffer</b>	Lyophilized from 1X PBS with 2% Trehalose
<b>UniProt</b>	P10810
<b>Applications</b>	Western Blot : 0.5-1ug/ml ELISA : 0.1-0.5ug/ml
<b>Limitations</b>	This Cd14 antibody is available for research use only.



Western blot testing of mouse RAW264.7 cell lysate with Cd14 antibody. Predicted molecular weight: 40-55 kDa depending on glycosylation level.

## Description

This gene encodes a protein that plays an important role in the innate immune response and is expressed in monocyte/macrophage cells. This gene product acts as a co-receptor that binds several microbial and fungal molecules, including lipopolysaccharides (LPS). This protein's LPS-binding activity is enhanced by the LPS binding protein (LBP) to allow binding to the TLR4-MD-2 co-receptor complex. The product of this gene is found in two forms, either as a soluble protein or attached to the cell surface by a glycosylphosphatidylinositol anchor.

## Application Notes

Optimal dilution of the Cd14 antibody should be determined by the researcher.

## Immunogen

An E.coli-derived mouse recombinant protein (amino acids D36-A260) was used as the immunogen for the Cd14 antibody.

## Storage

After reconstitution, the Cd14 antibody can be stored for up to one month at 4oC. For long-term, aliquot and store at -20oC. Avoid repeated freezing and thawing.